



JETPILOT
LIVE. RIDE. ESCAPE.

EUROPEAN WATERSPORTS
2019

JETPILOT IS WATERSPORTS

“THIS IS NOT A COLOUR UPDATE” - Welcome to Jetpilot S19

Live to ride, Ride to escape, and Escape to live....

Over the past 33 years we have seen trends come and go, we have pushed the boundaries of innovation. Our passion to one up the last, keeps us at the forefront of progression. Inspired by our athletes, our land and our sports.

This season we challenged our designers to produce a range that was on trend, progressively forward and innovative. We deconstructed and reconstructed our entire neoprene program knocking down the walls of preconceived ideas on what is and isn't possible.

S19 “This is not a colour update” unleashes the most technically advanced products the market has ever seen, New Fits, New materials, New construction techniques and New Innovation. Cementing Jetpilot's position as the most, premium brand in Watersports.

Sift through the pages and join us as we move forward, take a breath and remember to;

LIVE. RIDE. ESCAPE.



LIVE
RIDE
ESCAPE



SHINNOSUKE

C O N T E N T S

MENS WAKE VESTS	4	YOUTH WAKE VESTS	74	GLOVES	85
MENS PWC	32	YOUTH WAKE NEOPRENE	77	BAGS AND COVERS	86
MENS WAKE NEOPRENE	46	YOUTH PWC	78	WATER ACCESSORIES	90
MENS NEO/RASHIE TOPS	53	H2O FOOTWEAR	80	TOWABLES	94
LADIES WAKE VESTS	56	PROTECTION	81	APPAREL	102
LADIES PWC	70	HELMETS	81	ACCESSORIES	106
LADIES WAKE NEOPRENE	73	GOGGLES	82	PROMO ITEMS	108

VEST TECH



HAND MADE

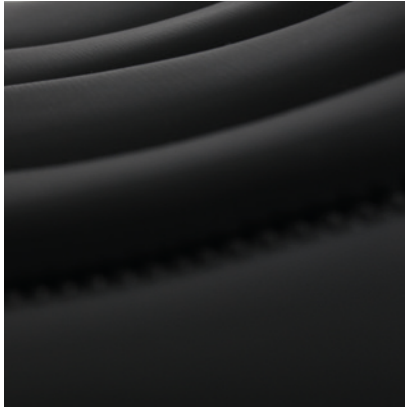
Our entire VEST program is HAND MADE. No robots means a focused, attention to detail, 100% guaranteed quality throughout the construction process.

M E N S W A K E V E S T S



360° SLICKSKIN STRETCH NEOPRENE

Spending hours with our supplier to develop a world first, 360° Slickskin Neoprene, Jetpilot has been able to create the most FLEXIBLE Slickskin Neoprene with Full 4way stretch. Using JETLITE FOAM internals makes the vest LITE WEIGHT, FLEXIBLE, SLICKSKIN neoprene Vest ever offered.



360° STRETCH NEOPRENE

Another Jetpilot first, our designers and product managers worked closely with our suppliers, creating our most FLEXIBLE Neoprene to date. Full 4way stretch Jersey combined with our new JETLITE FOAM makes a LITE WEIGHT, 360° degree Flexibility NEOPRENE offered.



JETLITE FOAM

Our JETLITE FOAM is the LIGHTEST most FLEXIBLE FOAM. JETLITE FOAM is more AERATED, allowing the foam more pliability giving extra mobility. JETLITE FOAM has a higher oxygen level making the foam a lot lighter due to the amount of air molecules. JETLITE FOAM is used in all our wetsuits and vests.



BEVELLED EDGE FREELITE BUOYANCY FOAM

Our BEVELLED EDGE BUOYANCY FOAM is INDUSTRY APPROVED. Each foam insert is BEVELLED BY HAND giving each piece a Radius edge for MAXIMUM COMFORT.



ANATOMICAL FIT

Consulting with our TEAM RIDERS we have created market leading fits for our wetsuits and Vests. Combining our NEW NEOPRENE and FOAM techniques our fits are first choice for world champions.



BODY LOCK

Jetpilot BODY LOCK PANEL has been created to aid in comfort and increase performance. The Body Lock Panel is a full functioning feature that locks the vest to the body. Using a combination of fabrics, The BODY LOCK PANEL grips to the body or wetsuit minimising vest lift and rider peace of mind.



YKK LOCK ZIPPERS

YKK LOCKING ZIPPERS are INDUSTRY APPROVED. Lock when zipped, designed not to open unless lifted and pulled down. Ride hard feel safe.



FLEX-LITE ULTRA NEOPRENE

Trusted and tested, ULTRA NEOPRENE is the most FLEXIBLE STANDARD NEOPRENE in the market. Used on our flight series suits and selected vests.

QUANTUM X

TECHNICAL FEATURES:



360° SLICKSKIN
STRETCH NEOPRENE

Spending hours with our supplier to develop a world first, 360° Slickskin Neoprene, Jetpilot has been able to create the most FLEXIBLE Slickskin Neoprene with Full 4way stretch. Using JETLITE FOAM internals makes the vest LITE WEIGHT, FLEXIBLE, SLICKSKIN neoprene Vest ever offered.



ANATOMICAL FIT

Consulting with our TEAM RIDERS we have created market leading fits for our wetsuits and Vests. Combining our NEW NEOPRENE and FOAM techniques our fits are first choice for world champions.



JETLITE FOAM

Our JETLITE FOAM is the LIGHTEST most FLEXIBLE FOAM. JETLITE FOAM is more AERATED, allowing the foam more pliability giving extra mobility. JETLITE FOAM has a higher oxygen level making the foam a lot lighter due to the amount of air molecules. JETLITE FOAM is used in all our wetsuits and vests.



BEVELED EDGE FREELITE
BUOYANCY FOAM

Our BEVELED EDGE BUOYANCY FOAM is INDUSTRY APPROVED. Each foam insert is BEVELED BY HAND giving each piece a Radius edge for MAXIMUM COMFORT.



BODY LOCK

Jetpilot BODY LOCK PANEL has been created to aid in comfort and increase performance. The Body Lock Panel is a full functioning feature that locks the vest to the body. Using a combination of fabrics, The BODY LOCK PANEL grips to the body or wetsuit minimising vest lift and rider peace of mind.



YKK LOCK ZIPPERS

YKK LOCKING ZIPPERS are INDUSTRY APPROVED. Lock when zipped, designed not to open unless lifted and pulled down. Ride hard feel safe.



GREY



BODY LOCK



BLACK

QUANTUM CE IMP NEO VEST

SIZES: S, M, L, XL, XXL

CODE/COLOUR: **19000 GREY**
19001 BLACK

• CE impact approved vest



QUANTUM **X**

TECHNICAL FEATURES:



360° STRETCH NEOPRENE

Another Jetpilot first, our designers and product managers worked closely with our suppliers, creating our most FLEXIBLE Neoprene to date. Full 4way stretch Jersey combined with our new JETLITE FOAM makes a LITE WEIGHT, 360° degree Flexibility NEOPRENE offered.



ANATOMICAL FIT

Consulting with our TEAM RIDERS we have created market leading fits for our wetsuits and Vests. Combining our NEW NEOPRENE and FOAM techniques our fits are first choice for world champions..



JETLITE FOAM

Our JETLITE FOAM is the LIGHTEST most FLEXIBLE FOAM. JETLITE FOAM is more AERATED, allowing the foam more pliability giving extra mobility. JETLITE FOAM has a higher oxygen level making the foam a lot lighter due to the amount of air molecules. JETLITE FOAM is used in all our wetsuits and vests.



BEVELLED EDGE FREELITE BUOYANCY FOAM

Our BEVELLED EDGE BUOYANCY FOAM is INDUSTRY APPROVED. Each foam insert is BEVELLED BY HAND giving each piece a Radius edge for MAXIMUM COMFORT.



YKK LOCK ZIPPERS

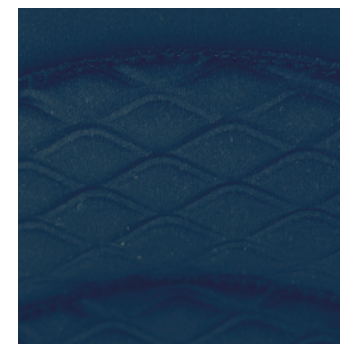
YKK LOCKING ZIPPERS are INDUSTRY APPROVED. Lock when zipped, designed not to open unless lifted and pulled down. Ride hard feel safe.



NAVY



PREMIUM DIAMOND EMBOSS



Cory Teunissen
CORY TEUNISSEN **CT**
 SIGNATURE SERIES VEST

CORY T QUANTUM CE IMP NEO VEST

SIZES: S, M, L, XL, 2XL, 3XL
 CODE/COLOUR: **19002 NAVY**

• CE impact approved vest



CORY TUENISSEN

C4!

TECHNICAL FEATURES:



360° STRETCH NEOPRENE

Another Jetpilot first, our designers and product managers worked closely with our suppliers, creating our most FLEXIBLE Neoprene to date. Full 4way stretch Jersey combined with our new JETLITE FOAM makes a LITE WEIGHT, 360° degree Flexibility NEOPRENE offered.



ANATOMICAL FIT

Consulting with our TEAM RIDERS we have created market leading fits for our wetsuits and Vests. Combining our NEW NEOPRENE and FOAM techniques our fits are first choice for world champions..



JETLITE FOAM

Our JETLITE FOAM is the LIGHTEST most FLEXIBLE FOAM. JETLITE FOAM is more AERATED, allowing the foam more pliability giving extra mobility. JETLITE FOAM has a higher oxygen level making the foam a lot lighter due to the amount of air molecules. JETLITE FOAM is used in all our wetsuits and vests.



BEVELED EDGE FREELITE BUOYANCY FOAM

Our BEVELED EDGE BUOYANCY FOAM is INDUSTRY APPROVED. Each foam insert is BEVELED BY HAND giving each piece a Radius edge for MAXIMUM COMFORT.



YKK LOCK ZIPPERS

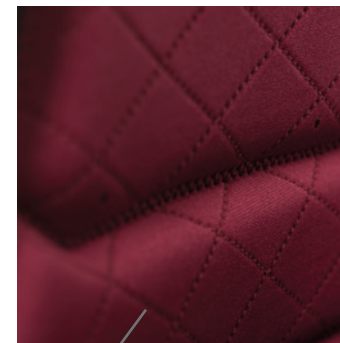
YKK LOCKING ZIPPERS are INDUSTRY APPROVED. Lock when zipped, designed not to open unless lifted and pulled down. Ride hard feel safe.



GRY HEATH



PREMIUM INTERNAL QUILT STITCH




LEWY WATT

SIGNATURE SERIES VEST

LEWY C4 IMP NEO VEST

SIZES: S, M, L, XL, 2XL, 3XL

CODE/COLOUR: 19003 GRY HEATH

• CE impact approved vest





TECHNICAL FEATURES:



FLEX-LITE ULTRA NEOPRENE

Trusted and tested, FLEX-LITE ULTRA NEOPRENE is the most FLEXIBLE STANDARD NEOPRENE in the market. Used on our flight series suits and selected vests.



ANATOMICAL FIT

Consulting with our TEAM RIDERS we have created market leading fits for our wetsuits and Vests. Combining our NEW NEOPRENE and FOAM techniques our fits are first choice for world champions..



JETLITE FOAM

Our JETLITE FOAM is the LIGHTEST most FLEXIBLE FOAM. JETLITE FOAM is more AERATED, allowing the foam more pliability giving extra mobility. JETLITE FOAM has a higher oxygen level making the foam a lot lighter due to the amount of air molecules. JETLITE FOAM is used in all our wetsuits and vests.



BEVELED EDGE FREELITE BUOYANCY FOAM

Our BEVELED EDGE BUOYANCY FOAM is INDUSTRY APPROVED. Each foam insert is BEVELED BY HAND giving each piece a Radius edge for MAXIMUM COMFORT.



YKK LOCK ZIPPERS

YKK LOCKING ZIPPERS are INDUSTRY APPROVED. Lock when zipped, designed not to open unless lifted and pulled down. Ride hard feel safe.



BLACK

C4 RAPID DRY IMPACT NEO VEST

SIZES: S, M, L, XL, XXL, 3XL

CODE/COLOUR: **18101 BLACK/ORANGE**

FEATURES: 100% Flex-Lite Stretch Panels • Super lightweight design for comfort & fit
• PVC foam core for supreme buoyancy • Custom printed shell
• CE impact approved vest



RATHY

TECHNICAL FEATURES:



360° STRETCH NEOPRENE

Another Jetpilot first, our designers and product managers worked closely with our suppliers, creating our most FLEXIBLE Neoprene to date. Full 4way stretch Jersey combined with our new JETLITE FOAM makes a LITE WEIGHT, 360° degree Flexibility NEOPRENE offered.



ANATOMICAL FIT

Consulting with our TEAM RIDERS we have created market leading fits for our wetsuits and Vests. Combining our NEW NEOPRENE and FOAM techniques our fits are first choice for world champions.



JETLITE FOAM

Our JETLITE FOAM is the LIGHTEST most FLEXIBLE FOAM. JETLITE FOAM is more AERATED, allowing the foam more pliability giving extra mobility. JETLITE FOAM has a higher oxygen level making the foam a lot lighter due to the amount of air molecules. JETLITE FOAM is used in all our wetsuits and vests.



BEVELED EDGE FREELITE BUOYANCY FOAM

Our BEVELED EDGE BUOYANCY FOAM is INDUSTRY APPROVED. Each foam insert is BEVELED BY HAND giving each piece a Radius edge for MAXIMUM COMFORT.



YKK LOCK ZIPPERS

YKK LOCKING ZIPPERS are INDUSTRY APPROVED. Lock when zipped, designed not to open unless lifted and pulled down. Ride hard feel safe.



BLACK



PREMIUM CHANNEL EMBOSS



Aaron Rathy

AARON RATHY

SIGNATURE SERIES VEST

RATHY IMP NEO VEST

SIZES: S, M, L, XL, 2XL

CODE/COLOUR: **19004 BLACK**

• CE impact approved vest



AARON RATHY

NIGHTHAWK II

TECHNICAL FEATURES:



FLEX-LITE ULTRA NEOPRENE

Trusted and tested, FLEX-LITE ULTRA NEOPRENE is the most FLEXIBLE STANDARD NEOPRENE in the market. Used on our flight series suits and selected vests.



ANATOMICAL FIT

Consulting with our TEAM RIDERS we have created market leading fits for our wetsuits and Vests. Combining our NEW NEOPRENE and FOAM techniques our fits are first choice for world champions...



JETLITE FOAM

Our JETLITE FOAM is the LIGHTEST most FLEXIBLE FOAM. JETLITE FOAM is more AERATED, allowing the foam more pliability giving extra mobility. JETLITE FOAM has a higher oxygen level making the foam a lot lighter due to the amount of air molecules. JETLITE FOAM is used in all our wetsuits and vests.



BEVELED EDGE FREELITE BUOYANCY FOAM

Our BEVELED EDGE BUOYANCY FOAM is INDUSTRY APPROVED. Each foam insert is BEVELED BY HAND giving each piece a Radius edge for MAXIMUM COMFORT.



YKK LOCK ZIPPERS

YKK LOCKING ZIPPERS are INDUSTRY APPROVED. Lock when zipped, designed not to open unless lifted and pulled down. Ride hard feel safe.



Nice to have. Integrated and comfortable licence pocket.



NIGHTHAWK 2 COMP NEO VEST

SIZES: S, M, L, XL, XXL, 3XL

CODE/COLOUR: **18100 MILITARY**

FEATURES: • 100% Flex-Lite Stretch Panels provides insane stretch and comfort • Super lightweight design for comfort & fit • PVC foam core for supreme buoyancy • All new stash pocket on chest • Custom Sublimation designed specially for TI! • non approved comp vest



PHILIPP
SCHRAMM

BONIFAY

TECHNICAL FEATURES:



360° STRETCH NEOPRENE

Another Jetpilot first, our designers and product managers worked closely with our suppliers, creating our most FLEXIBLE Neoprene to date. Full 4way stretch Jersey combined with our new JETLITE FOAM makes a LITE WEIGHT, 360° degree Flexibility NEOPRENE offered.



ANATOMICAL FIT

Consulting with our TEAM RIDERS we have created market leading fits for our wetsuits and Vests. Combining our NEW NEOPRENE and FOAM techniques our fits are first choice for world champions.



JETLITE FOAM

Our JETLITE FOAM is the LIGHTEST most FLEXIBLE FOAM. JETLITE FOAM is more AERATED, allowing the foam more pliability giving extra mobility. JETLITE FOAM has a higher oxygen level making the foam a lot lighter due to the amount of air molecules. JETLITE FOAM is used in all our wetsuits and vests.



BEVELED EDGE FREELITE BUOYANCY FOAM

Our BEVELED EDGE BUOYANCY FOAM is INDUSTRY APPROVED. Each foam insert is BEVELED BY HAND giving each piece a Radius edge for MAXIMUM COMFORT.



YKK LOCK ZIPPERS

YKK LOCKING ZIPPERS are INDUSTRY APPROVED. Lock when zipped, designed not to open unless lifted and pulled down. Ride hard feel safe.



BLACK

VEST DESIGN INSPIRED BY THE
RECYCLED TIMBER
WOODWORK BY SHANE



Shane Bonifay

SHANE BONIFAY

SIGNATURE SERIES VEST

SHANE BONIFAY NEO COMP VEST

SIZES: S, M, L, XL, 2XL, 3XL
CODE/COLOUR: **19005 BLACK**

• non approved comp vest



LAUNCH

TECHNICAL FEATURES:



FLEX-LITE ULTRA NEOPRENE

Trusted and tested, FLEX-LITE ULTRA NEOPRENE is the most FLEXIBLE STANDARD NEOPRENE in the market. Used on our flight series suits and selected vests.



ANATOMICAL FIT

Consulting with our TEAM RIDERS we have created market leading fits for our wetsuits and Vests. Combining our NEW NEOPRENE and FOAM techniques our fits are first choice for world champions..



JETLITE FOAM

Our JETLITE FOAM is the LIGHTEST most FLEXIBLE FOAM. JETLITE FOAM is more AERATED, allowing the foam more pliability giving extra mobility. JETLITE FOAM has a higher oxygen level making the foam a lot lighter due to the amount of air molecules. JETLITE FOAM is used in all our wetsuits and vests.



BEVELED EDGE FREELITE BUOYANCY FOAM

Our BEVELED EDGE BUOYANCY FOAM is INDUSTRY APPROVED. Each foam insert is BEVELED BY HAND giving each piece a Radius edge for MAXIMUM COMFORT.



YKK LOCK ZIPPERS

YKK LOCKING ZIPPERS are INDUSTRY APPROVED. Lock when zipped, designed not to open unless lifted and pulled down. Ride hard feel safe.



BLUE



BROWN

TONY IACCONI
SIGNATURE SERIES VEST

TONY IACCONI NEO COMP VEST

SIZES: S, M, L, XL, 2XL, 3XL
CODE/COLOUR: **19006 BLUE**
19007 BROWN

• non approved comp vest



ADDICT

REVERSIBLE

TECHNICAL FEATURES:



FLEX-LITE ULTRA NEOPRENE

Trusted and tested, FLEX-LITE ULTRA NEOPRENE is the most FLEXIBLE STANDARD NEOPRENE in the market. Used on our flight series suits and selected vests.



ANATOMICAL FIT

Consulting with our TEAM RIDERS we have created market leading fits for our wetsuits and vests. Combining our NEW NEOPRENE and FOAM techniques our fits are first choice for world champions.



JETLITE FOAM

Our JETLITE FOAM is the LIGHTEST most FLEXIBLE FOAM. JETLITE FOAM is more AERATED, allowing the foam more pliability giving extra mobility. JETLITE FOAM has a higher oxygen level making the foam a lot lighter due to the amount of air molecules. JETLITE FOAM is used in all our wetsuits and vests.



BEVELED EDGE FREELITE BUOYANCY FOAM

Our BEVELED EDGE BUOYANCY FOAM is INDUSTRY APPROVED. Each foam insert is BEVELED BY HAND giving each piece a radius edge for MAXIMUM COMFORT.



YKK LOCK ZIPPERS

YKK LOCKING ZIPPERS are INDUSTRY APPROVED. Lock when zipped, designed not to open unless lifted and pulled down. Ride hard feel safe.



ADDICT REV NEO COMP VEST

SIZES: S, M, L, XL, 2XL, 3XL

CODE/COLOUR: **19008 CAMO/BLACK**
19009 ORANGE/BLACK

• non approved comp vest



LEWY WATT

RIVAL

REVERSIBLE

TECHNICAL FEATURES:



FLEX-LITE ULTRA NEOPRENE

Trusted and tested, FLEX-LITE ULTRA NEOPRENE is the most FLEXIBLE STANDARD NEOPRENE in the market. Used on our flight series suits and selected vests.



ANATOMICAL FIT

Consulting with our TEAM RIDERS we have created market leading fits for our wetsuits and vests. Combining our NEW NEOPRENE and FOAM techniques our fits are first choice for world champions.



JETLITE FOAM

Our JETLITE FOAM is the LIGHTEST most FLEXIBLE FOAM. JETLITE FOAM is more AERATED, allowing the foam more pliability giving extra mobility. JETLITE FOAM has a higher oxygen level making the foam a lot lighter due to the amount of air molecules. JETLITE FOAM is used in all our wetsuits and vests.



BEVELED EDGE FREELITE BUOYANCY FOAM

Our BEVELED EDGE BUOYANCY FOAM is INDUSTRY APPROVED. Each foam insert is BEVELED BY HAND giving each piece a Radius edge for MAXIMUM COMFORT.



YKK LOCK ZIPPERS

YKK LOCKING ZIPPERS are INDUSTRY APPROVED. Lock when zipped, designed not to open unless lifted and pulled down. Ride hard feel safe.



OUTSIDE

WINE /
CHARCOAL

REVERSIBLE



INSIDE



OUTSIDE

BLACK /
TOBACCO

REVERSIBLE



INSIDE

RIVAL REV NEO COMP VEST

SIZES: S, M, L, XL, 2XL, 3XL

CODE/COLOUR: **19010 WINE/CHARCOAL**
19011 BLACK/TOBACCO

• non approved comp vest





LEWY WATT

RECON

TECHNICAL FEATURES:



FLEX-LITE ULTRA NEOPRENE

Trusted and tested, FLEX-LITE ULTRA NEOPRENE is the most FLEXIBLE STANDARD NEOPRENE in the market. Used on our flight series suits and selected vests.



ANATOMICAL FIT

Consulting with our TEAM RIDERS we have created market leading fits for our wetsuits and vests. Combining our NEW NEOPRENE and FOAM techniques our fits are first choice for world champions.



JETLITE FOAM

Our JETLITE FOAM is the LIGHTEST most FLEXIBLE FOAM. JETLITE FOAM is more AERATED, allowing the foam more pliability giving extra mobility. JETLITE FOAM has a higher oxygen level making the foam a lot lighter due to the amount of air molecules. JETLITE FOAM is used in all our wetsuits and vests.



BEVELED EDGE FREELITE BUOYANCY FOAM

Our BEVELED EDGE BUOYANCY FOAM is INDUSTRY APPROVED. Each foam insert is BEVELED BY HAND giving each piece a radius edge for MAXIMUM COMFORT.



YKK LOCK ZIPPERS

YKK LOCKING ZIPPERS are INDUSTRY APPROVED. Lock when zipped, designed not to open unless lifted and pulled down. Ride hard feel safe.



AQUA



CHARCOAL



RECON NEO COMP VEST

SIZES: S, M, L, XL, 2XL, 3XL

CODE/COLOUR: **19012 AQUA**
19013 CHARCOAL

• non approved comp vest





FREERIDE DLX

TECHNICAL FEATURES:



FLEX-LITE ULTRA NEOPRENE

Trusted and tested, FLEX-LITE ULTRA NEOPRENE is the most FLEXIBLE STANDARD NEOPRENE in the market. Used on our flight series suits and selected vests.



ANATOMICAL FIT

Consulting with our TEAM RIDERS we have created market leading fits for our wetsuits and vests. Combining our NEW NEOPRENE and FOAM techniques our fits are first choice for world champions.



JETLITE FOAM

Our JETLITE FOAM is the LIGHTEST most FLEXIBLE FOAM. JETLITE FOAM is more AERATED, allowing the foam more pliability giving extra mobility. JETLITE FOAM has a higher oxygen level making the foam a lot lighter due to the amount of air molecules. JETLITE FOAM is used in all our wetsuits and vests.



BEVELED EDGE FREELITE BUOYANCY FOAM

Our BEVELED EDGE BUOYANCY FOAM is INDUSTRY APPROVED. Each foam insert is BEVELED BY HAND giving each piece a radius edge for MAXIMUM COMFORT.



YKK LOCK ZIPPERS

YKK LOCKING ZIPPERS are INDUSTRY APPROVED. Lock when zipped, designed not to open unless lifted and pulled down. Ride hard feel safe.



ARM SEAL

Arm Seal 0.5mm Slickskin Seal for comfort and reduces movement of arm hole making for a more functional vest.



INTERNAL LICENSE HOLDER



BLACK



ARM SEAL



FREERIDE DLX NEO ISO 50 N VEST

SIZES: S, M, L, XL, 2XL
CODE/COLOUR: **19014 BLACK**

• EN ISO 12402-5 50N approved vest





TECHNICAL FEATURES:



FLEX-LITE ULTRA NEOPRENE

Trusted and tested, FLEX-LITE ULTRA NEOPRENE is the most FLEXIBLE STANDARD NEOPRENE in the market. Used on our flight series suits and selected vests.



ANATOMICAL FIT

Consulting with our TEAM RIDERS we have created market leading fits for our wetsuits and vests. Combining our NEW NEOPRENE and FOAM techniques our fits are first choice for world champions..



JETLITE FOAM

Our JETLITE FOAM is the LIGHTEST most FLEXIBLE FOAM. JETLITE FOAM is more AERATED, allowing the foam more pliability giving extra mobility. JETLITE FOAM has a higher oxygen level making the foam a lot lighter due to the amount of air molecules. JETLITE FOAM is used in all our wetsuits and vests.



BEVELED EDGE FREELITE BUOYANCY FOAM

Our BEVELED EDGE BUOYANCY FOAM is INDUSTRY APPROVED. Each foam insert is BEVELED BY HAND giving each piece a radius edge for MAXIMUM COMFORT.



YKK LOCK ZIPPERS

YKK LOCKING ZIPPERS are INDUSTRY APPROVED. Lock when zipped, designed not to open unless lifted and pulled down. Ride hard feel safe.



MILITARY

FREERIDE ISO 50N NEO VEST

SIZES: S, M, L, XL, XXL

CODE/COLOUR: **18107 MILITARY**

FEATURES: Flex-Lite neo panels provides insane comfort and stretch • Fully segmented panels conform to your body for the ultimate fit • PVC Foam core for supreme buoyancy • Hidden webbing • EN ISO 12402-5 50N approved vest



PHILIPP
SCHRAMM



VENTURE

SERIES



The Venture collection has been designed for those that live ride ESCAPE, driven by the journey into little-known waters - Escaping from the “norm”

Adventure is something that appeals to us all, those that love to be in the wild, thriving on the experience given from the pursuit of freedom.

Whether its off-shore fishing from the ski, boat or kayak, or chasing the elusive Loch Ness Monster deep up stream, the Venture collection has been designed to act like a second set of hands in those tense moments. Light weight, super stretch fabrics, functional features and accessories designed to endure the adVenture.

M E N S P W C



VENTURE

SERIES

TECHNICAL FEATURES:



DURABLE WATER PROOF 320D NYLON TASLON MATERIAL

5000mmWP / 700mmMVP. Designed for the Extreme Elements for Ultimate Warmth. All Seams Welded and Stitched keeping you dry in harsh open ocean environments.



SCUBA NECK HOOD

Hide Away Adjustable Hood, High Collar Double Velcro Lock System.



WATER RESISTANT ZIPPERS

Durable YKK PU Coated External Zippers to repel water on all pockets and main entry zipper.



ADJUSTABLE CUFFS AND WAIST SYNCH

Adjustable Cuffs and Waist Synch for perfect fit.



BREATHABLE UNDERARM ZIP PANELS

Easy Adjustable Air Flow Zip Panel underarm area to allow air flow when needed.



REFLECTIVE TAPE

High Vis - Extra Wide Reflective Tape Panel for Safety under low light adVenture conditions.



MULTI INTERNAL AND EXTERNAL UTILITY STASH POCKETS

3 External Pockets and 1 left chest internal stash pocket.



VENTURE RIDE JACKET

SIZES: S, M, L, XL, 2XL
CODE/COLOUR: **19015 BLACK/CHARCOAL**

TECHNICAL FEATURES:



DURABLE WATER PROOF 320D NYLON TASLON MATERIAL

5000mmWP / 700mmMVP. Designed for the Extreme Elements for Ultimate Warmth. Keeping you dry in harsh open ocean environments.



TRIPLE STITCH CONSTRUCTION

All Triple Stitch Construction on Seams for Durable to withstand the harsh elements.



MULTI EXTERNAL REINFORCED UTILITY POCKETS

Engineered Pockets To Fit Iphone/Android Heavy Duty Phone Cases - Custom Side Entry Pocket Shape For Clip Application. Rear Utility Pocket.



OVERSIZED BELT LOOPS

Durable over sized belt loops for Belt or Clipping tools to.



ADJUSTABLE ANKLE CUFFS

Adjustable Ankle Cuffs for perfect fit.



ARTICULATED KNEES

Engineered Pre-bent Knees for performance fit.



VENTURE RIDE PANT

SIZES: 30, 32, 34, 36, 38, 40
CODE/COLOUR: **19016 BLACK**

• CE impact approved vest



LIVE
RIDE
ESCAPE



HIDDEN SLEEVE LICENSE POCKET



VENTURE
SERIES



20
19

VENTURE JOHN AND JACKET 2/2mm

SIZES: S, M, L, XL, 2XL, 3XL

CODE/COLOUR: 19017 RED

19018 YELLOW

19019 CHARCOAL

18175 BLACK

• FABRICATION: 100% 360 Stretch Neoprene, Durable YKK Zips, Jet-Loc Seam Construction, Durable Jet-Tech Knee Pads, Lower Leg Zips, Seamless Butt Panels, Seamless Underarm Panels, Hidden Sleeve Pocket, Key Loop.



JETPILOT
SUPERGRIP
PATENT #2010100037



VENTURE CAUSE NEO ISO 50N VEST

SIZES: S, M, L, XL, 2XL, 3XL
CODE/COLOUR: **19020 RED**
19021 YELLOW
19022 CHARCOAL

• FABRICATION: 100% Flex Lite Neoprene, Patented Supergrip Handles, Freelite ISO Buoyancy Foam, Lanyard Safety D Clip, YKK Lock Zipper.
EN ISO 12402-5 50N approved Vest

JETPILOT
SUPERGRIP
PATENT #2010100037



STRIKE 4-BUCKLE ISO 50N NYLON VEST

SIZES: XS, S/M, L/XL, 2XL/3XL
CODE/COLOUR: **19027 WHITE**
19024 GREEN
19025 BLACK
19028 YELLOW
18114 BLUE

• FABRICATION: ISO Approved Nylon, Patented Supergrip Handles, ISO Standard Four Buckle Closure System, Freelite Buoyancy Foam, Lanyard D Clip.
EN ISO 12402-5 50N approved Vest

VENTURE SERIES

TECHNICAL FEATURES:



FLEX-LITE ULTRA NEOPRENE

Trusted and tested, FLEX-LITE ULTRA NEOPRENE is the most FLEXIBLE STANDARD NEOPRENE in the market. Used on our flight series suits and selected vests.



ANATOMICAL FIT

Consulting with our TEAM RIDERS we have created market leading fits for our wetsuits and vests. Combining our NEW NEOPRENE and FOAM techniques our fits are first choice for world champions.



JETLITE FOAM

Our JETLITE FOAM is the LIGHTEST most FLEXIBLE FOAM. JETLITE FOAM is more AERATED, allowing the foam more pliability giving extra mobility. JETLITE FOAM has a higher oxygen level making the foam a lot lighter due to the amount of air molecules. JETLITE FOAM is used in all our wetsuits and vests.



BEVELED EDGE FREELITE BUOYANCY FOAM

Our BEVELED EDGE BUOYANCY FOAM is INDUSTRY APPROVED. Each foam insert is BEVELED BY HAND giving each piece a radius edge for MAXIMUM COMFORT.



YKK LOCK ZIPPERS

YKK LOCKING ZIPPERS are INDUSTRY APPROVED. Lock when zipped, designed not to open unless lifted and pulled down. Ride hard feel safe.

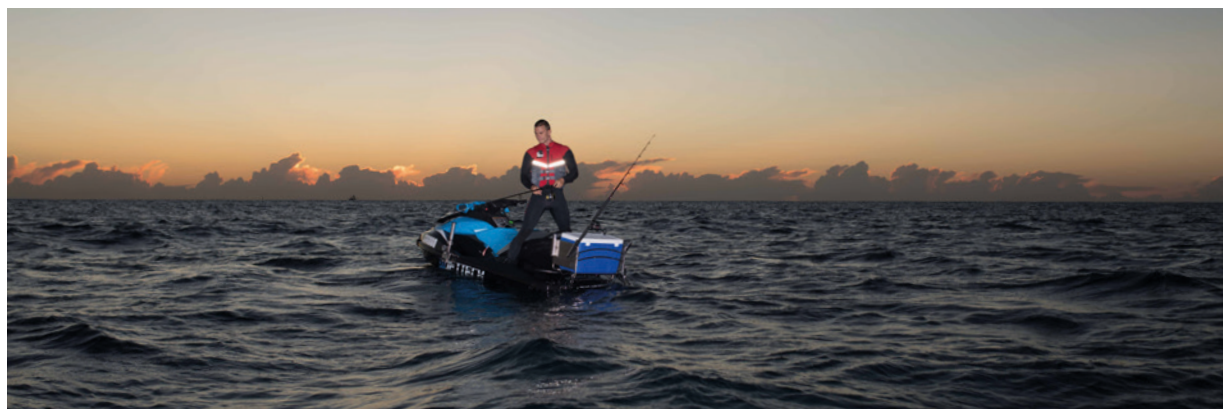


GO PRO MOUNT (BRACKET ONLY - GO PRO AND GO PRO MOUNT SOLD SEPARATELY)



REFLECTIVE TAPE

JETPILOT
SUPERGRIP
PATENT #2010100037



JETPILOT
SUPERGRIP
PATENT #2010100037



GO PRO MOUNT

JETPILOT
SUPERGRIP
PATENT #2010100037



VENTURE NEO ISO 50N VEST

SIZES: S, M, L, XL, 2XL

CODE/COLOUR: **19029 RED**
19030 BLACK

• FABRICATION: ISO 50N Approved, 100% Flex Lite Neoprene, Patented Supergrip Handles, GoPro Mount, Reflective Safety Tape, Durable PK Loc Zipper, 3 External Storage Pockets, Freelite ISO Buoyancy Foam, Dual Adjustable Internal Compression Belts, Multiple D Rings and Webbing Storage Loops.
EN ISO 12402-5 50N approved Vest



VENTURE NYLON ISO 50N VEST

SIZES: S, M, L, XL, 2XL

CODE/COLOUR: **19031 RED**

• FABRICATION: ISO 50N Approved, Patented Supergrip Handles, Reflective Safety Tape, Durable PK Loc Zipper, 4 External Storage Pockets, Freelite ISO Buoyancy Foam, Adjustable Compression Belts, Multiple D Rings Storage Loops.
EN ISO 12402-5 50N approved Vest

MATRIX/RX

RACESUIT TECHNOLOGY



JETPILOT PRO-TECH

IMPACT PROTECTION SYSTEM

■ IMPACT FORCE



PRO-TECH FABRIC

PRO-TECH ANTI ABRASION TOP LAYER
uses a durable Supratex Jersey laminated
to the PRO-TECH IMPACT FOAM



PRO-TECH
IMPACT FOAM

Our NEW PRO-TECH KNEE and SHIN
PADS use a durable Supratex Jersey
laminated to an EVA MOULDED FOAM
for PRO-TECHion and COMFORT



IMPACT ABSORPTION



ADDITIONAL
ABSORPTION LAYER



DESIGNED AND DEVELOPED
BY JETPILOT AUSTRALIA





360° STRETCH NEOPRENE

Spending hours with our supplier to develop a world first, 360° Slickskin Neoprene, Jetpilot has been able to create the most FLEXIBLE Slickskin Neoprene with Full 4way stretch. Using JETLITE FOAM internals makes the vest LITE WEIGHT, FLEXIBLE, SLICKSKIN neoprene Vest ever offered.



JETPILOT PRO-TECH

Our NEW PRO-TECH KNEE and SHIN PADS use a durable Supratex Jersey laminated to an EVA MOULDED FOAM for PRO-TECHion and COMFORT.



ENGINEERED ANKLE VELCRO PANEL

A Jetpilot exclusive Engineered Ankle Velcro Panel with optimum adjustability and power hold of velcro tabs to prevent ankle zips blowing out under extreme pressure.



JETLITE FOAM

Our JETLITE FOAM is the LIGHTEST most FLEXIBLE FOAM. JETLITE FOAM is more AERATED, allowing the foam more pliability giving extra mobility. JETLITE FOAM has a higher oxygen level making the foam a lot lighter due to the amount of air molecules. JETLITE FOAM is used in all our wetsuits and vests.



BREATHABLE FLOW PANELS

Perforated JETLITE FOAM strategically paced allows for WATER and AIR FLOW through the Wetsuit.



NYLON/SPANDEX UNDERARM PANEL

Nylon Spandex underarm panels for comfort, this Nylon Spandex panel reduces the neoprene in underarm area. To increase mobility.



NECK SEAL

The Neck Seal gives a more functional, more comfortable collar finish, reduces flushing.



YKK LOCK ZIPPERS

YKK DURABLE LOCKING ZIPPERS are INDUSTRY APPROVED. Lock when zipped, designed not to open unless lifted and pulled down. Ride hard, feel safe.



20
19

RX PWC NEO RACE JOHN & JACKET

SIZES: S, M, L, XL, 2XL

CODE/COLOUR: 19032 BLACK/WHITE

19033 NAVY/RED

19034 NAVY/GOLD

19035 YELLOW/BLACK

• FABRICATION: 100% 360 Stretch Neoprene, Durable YKK Ankle and Back Zip, Engineered Ankle Velcro Panel, Jet-Loc Seam Construction, Durable EVA PRO-TECH Knee and Shin Pads, Seamless Butt Panels, Lycra Underarm Panel, Breathable Flow Panels, Chest Zip and Seamless Underarm Panels on John.





X1 TOUR COAT 2mm

SIZES: S, M, L, XL, 2XL, 3XL
CODE/COLOUR: **19048 GREY HEATHER**

• FABRICATION: 100% FLEX-LITE, Durable YKK Zips, Jet-Loc Seam Construction, Custom Chambray Neoprene, 3 External Pockets, Cuff Adjusters, Hood, Anatomical Custom Fit, Reflective Tape



MATRIX PRO RACE PANTS

SIZES: S, M, L, XL, XXL
CODE/COLOUR: **18168 BLACK/WHITE**

FEATURES: 100% Super Strong Flush-Loc Seams • Unmatched stretch for comfort & fit • Cuts windchill & U.V. rays • Screen print details • Custom Screen Printed side panels • 2MM FlexLite Ultra Stretch Neoprene Panels • Race proven for over 25 Years

JETPILOT
PRO-TECH
IMPACT PROTECTION SYSTEM



JETPILOT
SUPERGRIP
PATENT #2010100037



RX PWC NYLON ISO 50N VEST

SIZES: S/M, L/XL, 2XL/XXXL

CODE/COLOUR: **19040 NAVY/RED**
19041 BLACK/WHITE
19042 NAVY/GOLD
19043 YELLOW/BLACK

- FABRICATION: ISO 50N approved, ISO Standard Dual Buckle Closure System, Freelite Buoyancy Foam, Durable ISO approved Nylon Fabric, Lanyard Safety D Clip.
EN ISO 12402-5 50N approved Vest



RX PWC NEO ISO 50N VEST

SIZES: S, M, L, XL, 2XL

CODE/COLOUR: **19044 BLACK/WHITE**
19045 NAVY/RED
19046 NAVY/GOLD
19047 YELLOW/BLACK

- FABRICATION: ISO 50N approved, ISO Standard Dual Buckle Closure System, Patented Supergrip Handles, Freelite Buoyancy Foam, Durable ISO approved Neoprene Fabric, Lanyard Safety D Clip.
EN ISO 12402-5 50N approved Vest



W E T S U I T T E C H



HAND MADE

Our entire WETSUIT program is HAND MADE. No robots means a focused, attention to detail, 100% guaranteed quality throughout the construction process.

M E N S W A K E N E O P R E N E



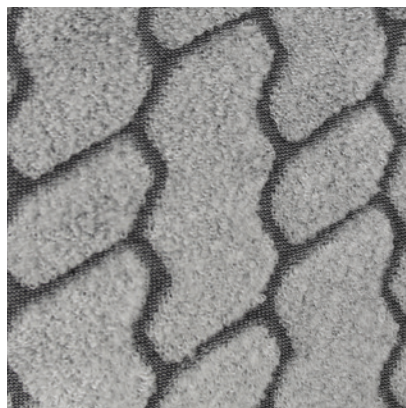
360° STRETCH NEOPRENE

Spending hours with our supplier to develop a world first, 360° Slickskin Neoprene, Jetpilot has been able to create the most FLEXIBLE Slickskin Neoprene with Full 4way stretch. Using JETLITE FOAM internals makes the vest LITE WEIGHT, FLEXIBLE, SLICKSKIN neoprene Vest ever offered.



THERMAL LINING

Our New THERMAL LINING makes a warm wetsuit warmer. A quick drying fabric comprising 60% POLYPROPYLENE you suit will dry 50% faster. The High Low profile and unique weaved CHANNELS makes up best THERMAL JERSEY available.



GBS SEAMS

Used in our thicker Wetsuits the GLUED and BLIND STITCH SEAM is an industry standard for Cold Water Wetsuits. 1st all seams are Glued together the Blindstitched. The Gluing process bonds seams securely and the Blindstitch only penetrates half way through the NEOPRENE RUBBER which eliminates needle holes. Water free warmth.



JETLITE FOAM

Our JETLITE FOAM is the LIGHTEST most FLEXIBLE FOAM. JETLITE FOAM is more AERATED, allowing the foam more pliability giving extra mobility. JETLITE FOAM has a higher oxygen level making the foam a lot lighter due to the amount of air molecules. JETLITE FOAM is used in all our wetsuits and vests.



360° STRETCH SPLIT NEOPRENE TAPE

0.5mm Stretch Split Neo is a 15mm Wide Tape that is cut from our 360 STRETCH NEOPRENE. Our X1 Series Wetsuits have 80% of Internal Seams Split Neoprene Taped for Warmth and Durability.



JET-TECH KNEEPAD

Our JET-TECH KNEE PADS use a durable Supratex Jersey laminated to a Dive Grade Foam for Durability and Comfort.



FLEX-LITE ULTRA NEOPRENE

Trusted and tested, FLEX-LITE ULTRA NEOPRENE is the most FLEXIBLE STANDARD NEOPRENE in the market. Used on our flight series suits and selected vests.



YKK ZIPPERS

YKK ZIPPERS are Industry Standard Durable Zippers.

X•1

JETPILOT

TECHNICAL FEATURES:



360° STRETCH NEOPRENE

Spending hours with our supplier to develop a world first, 360° Slickskin Neoprene, Jetpilot has been able to create the most FLEXIBLE Slickskin Neoprene with Full 4way stretch. Using JETLITE FOAM internals makes the vest LITE WEIGHT, FLEXIBLE, SLICKSKIN neoprene Vest ever offered.



THERMAL LINING

Our New THERMAL LINING makes a warm wetsuit warmer. A quick drying fabric comprising 60% POLYPROPYLENE you suit will dry 50% faster. The High Low profile and unique weaved CHANNELS makes up best THERMAL JERSEY available.



GBS SEAMS

Used in our thicker Wetsuits the GLUED and BLIND STITCH SEAM is an industry standard for Cold Water Wetsuits. 1st all seams are Glued together the Blindstitched. The Gluing process bonds seams securely and the Blindstitch only penetrates half way through the NEOPRENE RUBBER which eliminates needle holes. Water free warmth.



JETLITE FOAM

Our JETLITE FOAM is the LIGHTEST most FLEXIBLE FOAM. JETLITE FOAM is more AERATED, allowing the foam more pliability giving extra mobility. JETLITE FOAM has a higher oxygen level making the foam a lot lighter due to the amount of air molecules. JETLITE FOAM is used in all our wetsuits and vests.



360° STRETCH SPLIT NEOPRENE TAPE

0.5mm Stretch Split Neo is a 15mm Wide Tape that is cut from our 360 STRETCH NEOPRENE. Our X1 Series Wetsuits have 80% of Internal Seams Split Neoprene Taped for Warmth and Durability.



JET-TECH KNEEPAD

Our JET-TECH KNEE PADS use a durable Supratex Jersey laminated to a Dive Grade Foam for Durability and Comfort.



YKK ZIPPERS

YKK ZIPPERS are Industry Standard Durable Zippers.



X•1

JETPILOT



INTERNAL FEATURES:

X•1

JETPILOT



5 x 4 M M



INTERNAL FEATURES:

X1 5x4mm CZ LS STEAMER GBS

SIZES: S, M, L, XL, 2XL
CODE/COLOUR: **19049 GREY HEATHER**

• FABRICATION: 100% 360 Stretch Neoprene, Thermo Lining, Internal Neoprene Taping, Melco Reinforced Stress Points, Durable YKK Zip, GBS Seam Construction, Durable Jet-Tech Knee Pads, Ezi Over Head CZ Entry, Seamless Butt Panel, Seamless Underarm Panel



4 x 3 M M



INTERNAL FEATURES:

X1 4x3mm CZ LS STEAMER GBS

SIZES: S, M, L, XL, 2XL
CODE/COLOUR: **19050 GREY HEATHER**

• FABRICATION: 100% 360 Stretch Neoprene, Thermo Lining, Internal Neoprene Taping, Melco Reinforced Stress Points, Durable YKK Zip, GBS Seam Construction, Durable Jet-Tech Knee Pads, Ezi Over Head CZ Entry, Seamless Butt Panel, Seamless Underarm Panels



X1 3x2mm CZ LS STEAMER GBS

SIZES: S, M, L, XL, 2XL

CODE/COLOUR: **19124 GREY HEATHER**

• FABRICATION: 100% 360 Stretch Neoprene, Thermo Lining, Internal Neoprene Taping, Melco Reinforced Stress Points, Durable YKK Zip, GBS Seam Construction, Durable Jet-Tech Knee Pads, Ezi Over Head CZ Entry, Seamless Butt Panel, Seamless Underarm Panels



X1 GBS 3/2MM FULLSUIT

SIZES: S, M, L, XL, XXL

CODE/COLOUR: **18176 BLACK 3/2MM**

FEATURES: • Slant lock front chest zip entry system provides increased flexibility, water sealing and comfort • No back zip means unhindered flexibility through entire suit • Plyo-Pad Kneepads for extreme durability and abrasion resistance • 100% Super Stretch Imported Flex - Lite Neoprene is ultra warm, ultra light and extremely flexible • External GBS construction with full internal taping combine to eliminate water intrusion through seams • O-Ring Cuffs at wrist and ankles provide a flush resistance barrier and highly expandable for easy entry/exit



BLACK



CHARCOAL

FLIGHT 3x2mm BZ LS STEAMER FULLSUIT

SIZES: S, M, L, XL, 2XL, 3XL

CODE/COLOUR: **19051 BLACK**
19052 CHARCOAL

• FABRICATION: 100% 360 Stretch Neoprene, Durable YKK Zip, Jet-loc Seam Construction, Durable Jet-Tech Knee Pads, BZ Entry, Seamless Butt Panel, Seamless Underarm Panels



BLACK

FLIGHT 2x2mm BZ LS SPRINGSUIT

SIZES: S, M, L, XL, 2XL, 3XL

CODE/COLOUR: **19053 BLACK**

• FABRICATION: 100% 360 Stretch Neoprene, Durable YKK Zip, Jet-loc Seam Construction, BZ Entry, Seamless Butt Panel, Seamless Underarm Panels

MENS NEO / RASHIE TOPS



BLACK



CHARCOAL

FLIGHT 2x2mm BZ SS SPRINGSUIT

SIZES: S, M, L, XL, 2XL, 3XL

CODE/COLOUR: **19054 BLACK**
19055 CHARCOAL

• FABRICATION: 100% 360 Stretch Neoprene, Durable YKK Zip, Jet-loc Seam Construction, BZ Entry, Seamless Butt Panel, Seamless Underarm Panels



BLACK



CHARCOAL

FLIGHT 2x2mm FZ LS JACKET

SIZES: S, M, L, XL, 2XL

CODE/COLOUR: **19056 BLACK**
19057 CHARCOAL

• FABRICATION: 100% 360 Stretch Neoprene, Durable YKK Zip, Jet Loc Seam Construction, FZ Entry, Seamless Underarm Panels



F-15 THERMA FLEECE S/S RASHIE

SIZES: S, M, L, XL, 2XL
CODE/COLOUR: **19058 BLACK**

• FABRICATION: 94% Spandex 6% Spandex
Jet-Loc Seam Construction • Cuts UV Rays • Plush Thermal lining



F-15 THERMA FLEECE L/S RASHIE

SIZES: S, M, L, XL, 2XL
CODE/COLOUR: **19060 BLACK**

• FABRICATION: 94% Spandex 6% Spandex
Jet-Loc Seam Construction • Cuts UV Rays • Plush Thermal lining



PREMIUM S/S RASHIE

SIZES: S, M, L, XL, 2XL
CODE/COLOUR: **19059 GREY**

• FABRICATION: 6OZ LYCRA
Jet-Loc Seam Construction • Cuts UV Rays • 50+ UPF Rating For Maximum Sun Protection • One Colour Front and Back Print



PREMIUM L/S RASHIE

SIZES: S, M, L, XL, 2XL
CODE/COLOUR: **19061 GREY**

• FABRICATION: 6OZ LYCRA
Jet-Loc Seam Construction • Cuts UV Rays • 50+ UPF Rating For Maximum Sun Protection • One Colour Front and Back Print



SPLICED S/S RASHIE

SIZES: S, M, L, XL, 2XL, 3XL
CODE/COLOUR: **19062 BLACK**

- FABRICATION: 6OZ LYCRA
- Jet-Loc Seam Construction • Cuts UV Rays • 50+ UPF Rating For Maximum Sun Protection • One Colour Front and Back Print • Cap Sleeve Detail



SPLICED L/S RASHIE

SIZES: S, M, L, XL, 2XL, 3XL
CODE/COLOUR: **19063 BLACK**

- FABRICATION: 6OZ LYCRA
- Jet-Loc Seam Construction • Cuts UV Rays • 50+ UPF Rating For Maximum Sun Protection • One Colour Front and Back Print • Cap Sleeve Detail.



FULL CIRCLE S/S HYDRO TEE

SIZES: S, M, L, XL, 2XL
CODE/COLOUR: **19125 BLACK**

- FABRICATION: 100% POLYESTER
- Hydro Fabrication, 40+ UV Protection, One Colour Front and Back Print



SCRIPTED L/S RASHIE HOODIE

SIZES: S, M, L, XL, 2XL
CODE/COLOUR: **19064 ICE MARLE**

- FABRICATION: Hydro Fabrication, Jet-loc Seam Construction, 40+ UV Protection, Hooded Style.

LADIES WAKE

20
19



BEC GANGE



V E S T S

QUANTUM Y

TECHNICAL FEATURES:



360° STRETCH NEOPRENE

Another Jetpilot first, our designers and product managers worked closely with our suppliers, creating our most FLEXIBLE Neoprene to date. Full 4way stretch Jersey combined with our new JETLITE FOAM makes a LITE WEIGHT, 360° degree Flexibility NEOPRENE offered.



ANATOMICAL FIT

Consulting with our TEAM RIDERS we have created market leading fits for our wetsuits and Vests. Combining our NEW NEOPRENE and FOAM techniques our fits are first choice for world champions.



JETLITE FOAM

Our JETLITE FOAM is the LIGHTEST most FLEXIBLE FOAM. JETLITE FOAM is more AERATED, allowing the foam more pliability giving extra mobility. JETLITE FOAM has a higher oxygen level making the foam a lot lighter due to the amount of air molecules. JETLITE FOAM is used in all our wetsuits and vests.



BEVELED EDGE FREE-LITE BUOYANCY FOAM

Our BEVELED EDGE BUOYANCY FOAM is INDUSTRY APPROVED. Each foam insert is BEVELED BY HAND giving each piece a Radius edge for MAXIMUM COMFORT.



YKK LOCK ZIPPERS

YKK LOCKING ZIPPERS are INDUSTRY APPROVED. Lock when zipped, designed not to open unless lifted and pulled down. Ride hard feel safe.



BLUE

Bec Gange
BEC GANGE
SIGNATURE SERIES

BEC ASCENT NEO COMP VEST

SIZES: 8/S, 10/M, 12/L, 14/XL
CODE/COLOUR: 19065 BLUE

• non approved comp vest



BEC GANGE

P A C E R

TECHNICAL FEATURES:



360° STRETCH NEOPRENE

Another Jetpilot first, our designers and product managers worked closely with our suppliers, creating our most FLEXIBLE Neoprene to date. Full 4way stretch Jersey combined with our new JETLITE FOAM makes a LITE WEIGHT, 360° degree Flexibility NEOPRENE offered.



ANATOMICAL FIT

Consulting with our TEAM RIDERS we have created market leading fits for our wetsuits and Vests. Combining our NEW NEOPRENE and FOAM techniques our fits are first choice for world champions.



JETLITE FOAM

Our JETLITE FOAM is the LIGHTEST most FLEXIBLE FOAM. JETLITE FOAM is more AERATED, allowing the foam more pliability giving extra mobility. JETLITE FOAM has a higher oxygen level making the foam a lot lighter due to the amount of air molecules. JETLITE FOAM is used in all our wetsuits and vests.



BEVELED EDGE FREELITE BUOYANCY FOAM

Our BEVELED EDGE BUOYANCY FOAM is INDUSTRY APPROVED. Each foam insert is BEVELED BY HAND giving each piece a Radius edge for MAXIMUM COMFORT.



YKK LOCK ZIPPERS

YKK LOCKING ZIPPERS are INDUSTRY APPROVED. Lock when zipped, designed not to open unless lifted and pulled down. Ride hard feel safe.



OCEAN

PACER NEO COMP VEST

SIZES: 6/XS, 8/S, 10/M, 12/L, 14/XL
CODE/COLOUR: **19067 OCEAN**

• non approved comp vest



ALLURE

TECHNICAL FEATURES:



FLEX-LITE ULTRA NEOPRENE

Trusted and tested, FLEX-LITE ULTRA NEOPRENE is the most FLEXIBLE STANDARD NEOPRENE in the market. Used on our flight series suits and selected vests.



ANATOMICAL FIT

Consulting with our TEAM RIDERS we have created market leading fits for our wetsuits and Vests. Combining our NEW NEOPRENE and FOAM techniques our fits are first choice for world champions..



JETLITE FOAM

Our JETLITE FOAM is the LIGHTEST most FLEXIBLE FOAM. JETLITE FOAM is more AERATED, allowing the foam more pliability giving extra mobility. JETLITE FOAM has a higher oxygen level making the foam a lot lighter due to the amount of air molecules. JETLITE FOAM is used in all our wetsuits and vests.



BEVELED EDGE FREELITE BUOYANCY FOAM

Our BEVELED EDGE BUOYANCY FOAM is INDUSTRY APPROVED. Each foam insert is BEVELED BY HAND giving each piece a Radius edge for MAXIMUM COMFORT.



YKK LOCK ZIPPERS

YKK LOCKING ZIPPERS are INDUSTRY APPROVED. Lock when zipped, designed not to open unless lifted and pulled down. Ride hard feel safe.



SKY BLUE



ALLURE NEO COMP VEST

SIZES: 6/XS, 8/S, 10/M, 12/L, 14/XL
CODE/COLOUR: 19171 SKY BLUE

• non approved comp vest

SCOPE

REVERSIBLE

TECHNICAL FEATURES:



360° STRETCH NEOPRENE

Another Jetpilot first, our designers and product managers worked closely with our suppliers, creating our most FLEXIBLE Neoprene to date. Full 4way stretch Jersey combined with our new JETLITE FOAM makes a LITE WEIGHT, 360° degree Flexibility NEOPRENE offered.



ANATOMICAL FIT

Consulting with our TEAM RIDERS we have created market leading fits for our wetsuits and Vests. Combining our NEW NEOPRENE and FOAM techniques our fits are first choice for world champions.



JETLITE FOAM

Our JETLITE FOAM is the LIGHTEST most FLEXIBLE FOAM. JETLITE FOAM is more AERATED, allowing the foam more pliability giving extra mobility. JETLITE FOAM has a higher oxygen level making the foam a lot lighter due to the amount of air molecules. JETLITE FOAM is used in all our wetsuits and vests.



BEVELED EDGE FREELITE BUOYANCY FOAM

Our BEVELED EDGE BUOYANCY FOAM is INDUSTRY APPROVED. Each foam insert is BEVELED BY HAND giving each piece a Radius edge for MAXIMUM COMFORT.



YKK LOCK ZIPPERS

YKK LOCKING ZIPPERS are INDUSTRY APPROVED. Lock when zipped, designed not to open unless lifted and pulled down. Ride hard feel safe.



REVERSIBLE

SCOPE REVERSIBLE NEO COMP VEST

SIZES: 6/XS, 8/S, 10/M, 12/L, 14/XL
CODE/COLOUR: **19068 BLACK**

• CE impact approved vest



MACKENZIE MCCARTHY



SCOPE

TECHNICAL FEATURES:

FLEX LITE ULTRA FLEX-LITE ULTRA NEOPRENE

Trusted and tested, FLEX-LITE ULTRA NEOPRENE is the most FLEXIBLE STANDARD NEOPRENE in the market. Used on our flight series suits and selected vests.

ANATOMICAL FIT

Consulting with our TEAM RIDERS we have created market leading fits for our wetsuits and Vests. Combining our NEW NEOPRENE and FOAM techniques our fits are first choice for world champions..

JETLITE FOAM

Our JETLITE FOAM is the LIGHTEST most FLEXIBLE FOAM. JETLITE FOAM is more AERATED, allowing the foam more pliability giving extra mobility. JETLITE FOAM has a higher oxygen level making the foam a lot lighter due to the amount of air molecules. JETLITE FOAM is used in all our wetsuits and vests.

BEVELED EDGE FREELITE BUOYANCY FOAM

Our BEVELED EDGE BUOYANCY FOAM is INDUSTRY APPROVED. Each foam insert is BEVELED BY HAND giving each piece a Radius edge for MAXIMUM COMFORT.

YKK LOCK ZIPPERS

YKK LOCKING ZIPPERS are INDUSTRY APPROVED. Lock when zipped, designed not to open unless lifted and pulled down. Ride hard feel safe.



TEAL/LTD



[REVERSIBLE]

SCOPE

[REVERSIBLE]

SCOPE REVERSIBLE COMP NEO VEST WMS.

SIZES: 6/XS, 8/S, 10/M, 12/L, 14/XL
CODE/COLOUR: 18119 TEAL/LTD

FEATURES: • Flex-Lite neo panels for comfort and stretch • Fully segmented panels conform to your body for the ultimate fit • Reversible vest design • PVC Foam core for supreme buoyancy • Hidden webbing • non approved comp vest

REVERSE IT
— TWO VESTS IN ONE —

SCOPE
JETPILOT

SCOPE
Jetpilot



TECHNICAL FEATURES:



FLEX-LITE ULTRA NEOPRENE

Trusted and tested, FLEX-LITE ULTRA NEOPRENE is the most FLEXIBLE STANDARD NEOPRENE on the market. Used on our flight series suits and selected vests.



ANATOMICAL FIT

Consulting with our TEAM RIDERS we have created market leading fits for our wetsuits and Vests. Combining our NEW NEOPRENE and FOAM techniques our fits are first choice for world champions.



JETLITE FOAM

Our JETLITE FOAM is the LIGHTEST most FLEXIBLE FOAM. JETLITE FOAM is more AERATED, allowing the foam more pliability giving extra mobility. JETLITE FOAM has a higher oxygen level making the foam a lot lighter due to the amount of air molecules. JETLITE FOAM is used in all our wetsuits and vests.



BEVELED EDGE FREELITE BUOYANCY FOAM

Our BEVELED EDGE BUOYANCY FOAM is INDUSTRY APPROVED. Each foam insert is BEVELED BY HAND giving each piece a Radius edge for MAXIMUM COMFORT.



YKK LOCK ZIPPERS

YKK LOCKING ZIPPERS are INDUSTRY APPROVED. Lock when zipped, designed not to open unless lifted and pulled down. Ride hard feel safe.



X1 RAPID DRY IMPACT NEO VEST WMS.

SIZES: 6/XS, 8/S, 10/M, 12/L, 14/XL
CODE/COLOUR: **18118 BLACK**

FEATURES: • 100% Flex-Lite Stretch Panels • Super lightweight design for comfort & fit • PVC foam core for supreme buoyancy • Vibrant sublimation • Custom printed Logos • CE impact approved vest



The Recon.

TECHNICAL FEATURES:



FLEX-LITE ULTRA NEOPRENE

Trusted and tested, FLEX-LITE ULTRA NEOPRENE is the most FLEXIBLE STANDARD NEOPRENE on the market. Used on our flight series suits and selected vests.



ANATOMICAL FIT

Consulting with our TEAM RIDERS we have created market leading fits for our wetsuits and Vests. Combining our NEW NEOPRENE and FOAM techniques our fits are first choice for world champions.



JETLITE FOAM

Our JETLITE FOAM is the LIGHTEST most FLEXIBLE FOAM. JETLITE FOAM is more AERATED, allowing the foam more pliability giving extra mobility. JETLITE FOAM has a higher oxygen level making the foam a lot lighter due to the amount of air molecules. JETLITE FOAM is used in all our wetsuits and vests.



BEVELED EDGE FREELITE BUOYANCY FOAM

Our BEVELED EDGE BUOYANCY FOAM is INDUSTRY APPROVED. Each foam insert is BEVELED BY HAND giving each piece a Radius edge for MAXIMUM COMFORT.



YKK LOCK ZIPPERS

YKK LOCKING ZIPPERS are INDUSTRY APPROVED. Lock when zipped, designed not to open unless lifted and pulled down. Ride hard feel safe.



PINK



CHAR



RECON NEO COMP VEST

SIZES: 6/XS, 8/S, 10/M, 12/L, 14/XL

CODE/COLOUR: **19069 PINK**

19070 CHARCOAL

• non approved comp vest





MACKENZIE MCCARTHY

LADIES PWC



MATRIX/RX

 EMMA-NELLIE ORTENDAHL

RACESUIT TECHNOLOGY



360° STRETCH NEOPRENE

Spending hours with our supplier to develop a world first, 360° Slickskin Neoprene, Jetpilot has been able to create the most FLEXIBLE Slickskin Neoprene with Full 4way stretch. Using JETLITE FOAM internals makes the vest LITE WEIGHT, FLEXIBLE, SLICKSKIN neoprene Vest ever offered.



JETPILOT PRO-TECH

Our NEW PRO-TECH KNEE and SHIN PADS use a durable Supratex Jersey laminated to an EVA MOULDED FOAM for PRO-TECHion and COMFORT.

ENGINEERED ANKLE
VELCRO PANEL

A Jetpilot exclusive Engineered Ankle Velcro Panel with optimum adjustability and power hold of velcro tabs to prevent ankle zips blowing out under extreme pressure.



BREATHABLE FLOW PANELS

Perforated JETLITE FOAM strategically paced allows for WATER and AIR FLOW through the Wetsuit.



JETLITE FOAM

Our JETLITE FOAM is the LIGHTEST most FLEXIBLE FOAM. JETLITE FOAM is more AERATED, allowing the foam more pliability giving extra mobility. JETLITE FOAM has a higher oxygen level making the foam a lot lighter due to the amount of air molecules. JETLITE FOAM is used in all our wetsuits and vests.



YKK LOCK ZIPPERS

YKK DURABLE LOCKING ZIPPERS are INDUSTRY APPROVED. Lock when zipped, designed not to open unless lifted and pulled down. Ride hard, feel safe.



FEATURING:



JETPILOT
PRO-TECH
 IMPACT PROTECTION SYSTEM



LADIES RX RACE SUIT JANE & JACKET

SIZES: 6/XS, 8/S, 10/M, 12/L, 14/XL, 16/XXL
 CODE/COLOUR: **19073 YELLOW/PINK**

• FABRICATION: 100% 360 Stretch Neoprene, Durable YKK Ankle Zips, Engineered Ankle Velcro Panel, Jet-Loc Seam Construction, Durable EVA PRO-TECH Knee and Shin Pads, Seamless Butt Panels, Lycra Underarm Panel, Breathable Flow Panels, Cross back Zip-Free Design, Seamless Underarm Panels and Durable YKK Chest Zip on Jacket



JETPILOT
 SUPERGRIP

RX F/E NEO ISO 50N VEST

SIZES: 6/XS, 8/S, 10/M, 12/L, 14/XL
 CODE/COLOUR: **19075 YELLOW/PINK**

• FABRICATION: ISO 50N Approved, ISO Standard Dual Buckle Closure System, Patented Supergrip Handles, Freelite Buoyancy Foam, Durable ISO Approved Neoprene Fabric, Lanyard Safety D Clip. EN ISO 12402-5 50N approved vest



RX S/E NYLON ISO 50N VEST

SIZES: S/M
 CODE/COLOUR: **19076 YELLOW/PINK**

• FABRICATION: : ISO 50N Approved, ISO Standard Dual Buckle Closure System, Patented Supergrip Handles, Freelite Buoyancy Foam, Durable ISO Approved Neoprene Fabric, Lanyard Safety D Clip. EN ISO 12402-5 50N approved vest



2MM LADIES FLIGHT TOUR COAT

SIZES: 8/S, 10/M, 12/L, 14/XL, 16/XXL
CODE/COLOUR/PRICE: **19077 TEAL**

- FABRICATION: 100% FLEX-LITE NEOPRENE
- 2mm Flex-Lite Panels for Comfort and Fit • Anatomically Positioned Seams • Jet-Loc Seam Construction • Durable YKK Front Zip • Velcro Closure Cuff System • Hood with Draw String • Front Pockets with YKK Zipper Closure



CAUSE NEO ISO 50N VEST

SIZES: 6/XS, 8/S, 10/M, 12/L, 14/XL
CODE/COLOUR: **19071 TEAL**

- FABRICATION: • NEOPRENE • Comfortable Front Zip Design • Highest quality PVC Foam Core • Two 1-1/2 heavy duty buckles & webbing • Durable mesh drainage gussets • Custom designed print • Screen printed logos • Segmented design for extra flex • Lanyard clip
- EN ISO 12402-5 50N approved vest



CAUSE NYLON ISO 50N VEST

SIZES: 6/XS, 8/S, 10/M, 12/L, 14/XL
CODE/COLOUR: **19072 TEAL**

- FABRICATION: NYLON
- FEATURES: 4 Buckle Design • Highest Quality PVC Foam Core • Heavy Duty Coated Nylon • Lanyard Clip • Screen Printed Details
- EN ISO 12402-5 50N approved vest

LADIES WAKE NEOPRENE



FLIGHT 2/2mm S/S SPRING SUIT

SIZES: 8/S, 10/M, 12/L, 14/XL, 16/XXL
CODE/COLOUR: **19078 TEAL**

• FABRICATION: 100% 360 Stretch Neoprene, Durable YKK Zip, Jet-loc Seam Construction, BZ Entry, Seamless Butt Panel, Seamless Underarm Panels



FLIGHT 3/2mm LS STEAMER FULLSUIT

SIZES: 8/S, 10/M, 12/L, 14/XL, 16/XXL
CODE/COLOUR: **19079 TEAL**

• FABRICATION: 100% 360 Stretch Neoprene, Durable YKK Zip, Jet-loc Seam Construction, Durable Jet-Tech Knee Pads, BZ Entry, Seamless Butt Panel, Seamless Underarm Panels

YOUTH WAKE



VESTS

LAUNCH

TONY IACCONI
SIGNATURE SERIES VEST



BLACK/
YELLOW



PRIME YOUTH BOYS COMP NEO VEST

SIZES: S / 8 years, M / 10 years, L / 12 years, XL / 14 years
CODE/COLOUR: **19080 BLACK/YELLOW**

- FABRICATION: 100% Flex Lite Ultra Neoprene, Tony Iacconi Signature Series, Durable YKK Lock Zipper, Freelite Bevelled Edge Buoyancy Foam, Anatomical Fit
- non approved comp vest



SKY BLUE



PRIME YOUTH GIRLS COMP NEO VEST

SIZES: S / 8 years, M / 10 years, L / 12 years, XL / 14 years
CODE/COLOUR: **19081 SKY BLUE**

- FABRICATION: FLEX-LITE ULTRA NEOPRENE
- Ultra Lightweight Construction and design • PVC Foam Core for supreme buoyancy • Custom High Density screen printed logo
- non approved comp vest



CAUSE YOUTH/TEEN NEO ISO 50N VEST

SIZES: YOUTH 8-10 years, TEEN 12- 14 years
CODE/COLOUR: **19082 BLUE PINK**
19083 ORANGE

- FABRICATION: FLEX-LITE ULTRA NEOPRENE
- Two Heavy Duty Buckles and Webbing • Durable Mesh Drainage Gussets • Simple and Comfortable Front Zip Design • Highest Quality Foam Core
- EN ISO 12402-5 50N approved vest



CAUSE YOUTH/TEEN NYLON ISO 50N VEST

SIZES: YOUTH 8-10 years, TEEN 12- 14 years
CODE/COLOUR: **19084 BLACK/YELLOW**
19085 BLUE/PINK

- FABRICATION: CE NYLON
- 3 heavy duty buckles and webbing belts • Drainage Points • Simple and Comfortable Front Zip Design • Highest Quality Foam Core
- EN ISO 12402-5 50N approved vest

20
19



LIFE VEST NEO CHILD ISO 100N

SIZE: CHILD 4 - 6 YEARS
CODE/COLOUR: **17060 RED**
19086 BLACK/YELLOW
19087 BLUE/PINK

- FABRICATION: FLEX-LITE ULTRA NEOPRENE
- Two Heavy Duty Buckles and Webbing • Durable Mesh Drainage Gussets • Simple and Comfortable Front Zip Design • Highest Quality Foam Core • Reflective Taping • Safety Whistle • Comfortable Pillow with grab strap • Double webbing Safety Crutch Strap • EN ISO 12402-4, 100N approved



CAUSE INFANT NYLON ISO 100N VEST

SIZE: INFANT 2 YEARS (10-15 kg)
CODE/COLOUR: **19088 ORANGE**

- FABRICATION: CE NYLON
- Safe and Secure 100N floatation • Highly Visible Neon Orange Nylon • Heavy duty Buckles and webbing belts • Front zip for added security of fit • Comfortable Pillow Design with Reflective Taping • Safety Whistle • Safety Crutch Strap • Highest quality foam core • EN ISO 12402-4, 100N approved



LIFE VEST NYLON INFANT ISO 100N

SIZE: INFANT 1 - 2 YEARS
CODE/COLOUR: **11071 ORANGE**

- FEATURES: Comfortable Front Entry Design • Heavy Duty Coated Nylon • Highest Quality PVC Foam Core • Bright Colors for Visibility
- EN ISO 12402-4, 100N approved

YOUTH WAKE NEOPRENE



CHARCOAL



PINK

FLIGHT YOUTH 3/2MM LS FULLSUIT

SIZES: 6, 8, 10, 12, 14 years
CODE/COLOUR: **19089 CHARCOAL**
19090 PINK

• FABRICATION: 100% 360 Stretch Neoprene, Durable YKK Zip, Jet-loc Seam Construction, Durable Jet-Tech Knee Pads, BZ Entry, Seamless Butt Panel, Seamless Underarm Panels.



CHARCOAL



PINK

FLIGHT YOUTH 2/2MM S/S SPRINGSUIT

SIZES: 6, 8, 10, 12, 14 years
CODE/COLOUR: **19091 CHARCOAL**
19092 PINK

• FABRICATION: 100% 360 Stretch Neoprene, Durable YKK Zip, Jet-loc Seam Construction, BZ Entry, Seamless Butt Panel, Seamless Underarm Panels

YOUTH MATRIX/RX

JAYDEN

RACESUIT TECHNOLOGY



360° STRETCH NEOPRENE

Spending hours with our supplier to develop a world first, 360° Slickskin Neoprene, Jetpilot has been able to create the most FLEXIBLE Slickskin Neoprene with Full 4way stretch. Using JETLITE FOAM internals makes the vest LITE WEIGHT, FLEXIBLE, SLICKSKIN neoprene Vest ever offered.



JETPILOT PRO-TECH

Our NEW PRO-TECH KNEE PADS use a durable Supratex Jersey laminated to an EVA MOULDED FOAM for PRO-TECHion and COMFORT. Shin Pads for Youth Screenprinted for technical aesthetics.



ENGINEERED ANKLE VELCRO PANEL

A Jetpilot exclusive Engineered Ankle Velcro Panel with optimum adjustability and power hold of velcro tabs to prevent ankle zips blowing out under extreme pressure.



JETLITE FOAM

Our JETLITE FOAM is the LIGHTEST most FLEXIBLE FOAM. JETLITE FOAM is more AERATED, allowing the foam more pliability giving extra mobility. JETLITE FOAM has a higher oxygen level making the foam a lot lighter due to the amount of air molecules. JETLITE FOAM is used in all our wetsuits and vests.



YKK LOCK ZIPPERS

YKK DURABLE LOCKING ZIPPERS are INDUSTRY APPROVED. Lock when zipped, designed not to open unless lifted and pulled down. Ride hard, feel safe.



YOUTH PWC



JETPILOT
PRO-TECH
IMPACT PROTECTION SYSTEM

RX YOUTH PWC NEO RACE JOHN

SIZES: 8, 10, 12 years
CODE/COLOUR: **19093 NAVY/RED**

• FABRICATION: 100% 360 Stretch Neoprene, Durable YKK Zips on Back and Ankles, Jet-Loc Seam Construction, Durable EVA PRO-TECH Pads on Knee and Screenprinted Shins, Lower Leg Zips, Seamless Butt Panels, Uni-sex sizing



RX YOUTH PWC NEO RACE JACKET

SIZES: 8, 10, 12 years
CODE/COLOUR: **19094 NAVY/RED**

• FABRICATION: 100% 360 Stretch Neoprene, Durable YKK Chest Zip, Jet-Loc Seam Construction, Seamless Underarm Panels, Uni-sex sizing



RX YOUTH PWC NEO VEST ISO 50N

SIZES: XS (YOUTH)
CODE/COLOUR: **19095 NAVY/RED**

• FABRICATION: NEOPRENE, ISO 50N Approved, ISO Standard Dual Buckle Closure System, Freelite Buoyancy Foam, Durable ISO Approved Neoprene Fabric, Lanyard Safety D Clip, Uni-sex sizing • EN ISO 12402-5 50N approved vest

H2O FOOTWEAR



X3 JET LITE CROSS TRAINER

SIZES: 7, 8, 9, 10, 11, 12, 13
CODE/COLOUR: **18226 BLACK/WHITE**

- FABRICATION: SYNTHETIC PU AND POLYESTER UPPER WITH INJECTION EVA SOLE Super Lightweight With Excellent Impact Absorbing Sole • Quick Draining and Quick Drying Capability



HYDRO SHOE

SIZES: 7, 8, 9, 10, 11, 12, 13
CODE/COLOUR: **19096 BLACK**

- FABRICATION: 2MM STRETCHY NEOPRENE Open Dura-Mesh Forefoot drainage panels • Ultra Grip Flex Outer Sole • Elastic Cinch Cord with Barrel Lock



HI CUT HYDRO SHOE

SIZES: 7, 8, 9, 10, 11, 12, 13
CODE/COLOUR: **19097 BLACK/YELLOW**
19036 BLACK7CHARCOAL

- FABRICATION: Durable 1.5mm Upper. High Cut Design Offers Ankle Protection. Grooved Rubber Sole for Traction. Drawstring with Barrel lock for secure closure



X2 PHANTOM FLEX LITE BOOT

SIZES: 7, 8, 9, 10, 11, 12, 13
CODE/COLOUR: **17418 BLACK**

- FABRICATION: SYNTHETIC NUBUCK UPPER Embossed Detail • Secure Ankle Strap Closure with Custom Embroidery • Sonic Welded JP Icon • Low Profile High Traction Sole • Lace Storage in tongue • Super Light and Flexible



BLACKHAWK BOOT

SIZES: 7, 8, 9, 10, 11, 12, 13
CODE/COLOUR: **19098 BLACK**

- FABRICATION: NEOPRENE Durable Neoprene upper offers Support and Protection • Reinforced Heel and Toe • Heavy Duty YKK Zippers and adjustable ankle strap ensures a comfortable flush resistant seal



TURBO REAR ZIP BOOT

SIZES: 7, 8, 9, 10, 11, 12, 13
CODE/COLOUR: **18228 BLACK**

- FABRICATION: NEOPRENE Textured Neoprene • Posi Traction Sole • Dual Density rubber upper with arch lock for extra support • High Quality YKK Zippers

PROTECTION



PRO-TECH X1 BACK PROTECTOR

SIZES: M, L, XL
CODE/COLOUR: **15120 BLACK**

- FABRICATION: ABS
- Rugged and dependable Protection • Harness and Kidney Belt for a secure fit • Custom Jetpilot Jacquard and Woven Labels
- CE EN1621-2:2014 Approved



PRO-TECH LEG GUARDS

ONE SIZE
CODE/COLOUR: **15121 BLACK**

- FABRICATION: ABS
- Tough Impact Resistant Outer Shell • Energy Absorbing Memory Foam with Custom Embossing Detail • Custom Painted Debossed Jetpilot Logos • Velcro Logo Straps for a secure fit

HELMETS



WAKE HELMET

SIZES: S/M (54-58cm), L/XL (59-62cm)
CODE/COLOUR: **18350 BLACK**
18351 ARMY
18352 CHARCOAL

- FABRICATION: ABS
- Certified by CE EN 1385** Approved For Watersports Use • Stealth Matte Coating • Comfy Interior Padding With Terry Lining • Removable Neoprene Ear Pads



JP FREERIDE HELMET

SIZES: M, L
CODE/COLOUR: **18141 BLACK/CHARCOAL**

- FABRICATION: FIBRE GLASS
- Custom JP Carbon and Matte Black Graphics
- Removable Snap In Liner • Extra Visor Included

CE EN 1078 Approved for Mountain Bike
• **Not A Motorsports Helmet And Not Approved For Racing**
• **Not available for France**



MATRIX/RX

FLOATING GOGGLES - 100% POLARISED

MATRIX RX GOGGLE TECHNOLOGY



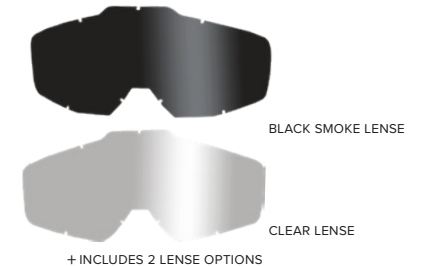
• FLOATING CAPABILITY USING EXCLUSIVE JP FOAM COMPOSITION - UNSINKABLE

• HI VIS FRAME AND STRAP COLOURS FACILITATE FAST LOCATION/RETRIEVAL

• SILICONE COATED INNER TO ELIMINATE SLIPPAGE

• GOGGLE X-WINGS FOR SEAMLESS HELMET FIT

• INTERCHANGEABLE LENSE SYSTEM
OPTIONS OF CLEAR, SMOKE, RED AND BLUE RADIUM POLARISED LENSES. POLARISED LENSE BLOCKS 100% OF HARMFUL UV LIGHT AND ELIMINATES GLARE FEATURING



MATRIX RX MENS RACE GOGGLE

ONE SIZE

CODE/COLOUR: **19130 RED**
19131 NAVY
19132 BLACK

• FEATURES:

- Goggle X-Wings for Seamless Helmet Fit
- Hi Vis frame and strap colours facilitate fast location/retrieval
- Outer frame helps provide perfect fit and stability at speed
- Multi colour gradient print
- Large lens area provides optimum visibility
- Supplied with Smoke Polarised and Clear Lenses –
Polarised lens blocks 100% of harmful UV light and eliminates glare
- Clear Lens with anti scratch coating both sides
- High Density silicone logo on 45mm strap with silicone coated inner to eliminate slippage
- Floating Capability using exclusive JP Foam composition - Unsinkable



RADIUM MENS MATRIX RX LENSE REPLACEMENT

ONE SIZE

CODE/COLOUR: **19133 RED**
19134 BLUE

• FEATURES:

- Radium Polarised Lenses
- Polarised lens blocks 100% of harmful UV light and eliminates glare featuring shiny mirror finish



+ INCLUDES 2 LENS OPTIONS



BLACK SMOKE LENSE



CLEAR LENSE

MATRIX RX YOUTH RACE GOGGLE

ONE SIZE

CODE/COLOUR: **19135 RED**
19136 BLACK

• FEATURES:

- All new model for 2019
- Hi Vis frame and strap colours facilitate fast location/retrieval
- Outer frame helps provide perfect fit and stability at speed
- Multi colour gradient print
- Large lens area provides optimum visibility
- Supplied with Smoke Polarised and Clear Lenses – Polarised lens blocks 100% of harmful UV light and eliminates glare
- Clear Lens with anti scratch coating both sides
- High Density silicone logo on 45mm strap with silicone coated inner to eliminate slippage
- Floating Capability using exclusive JP Foam composition - Unsinkable



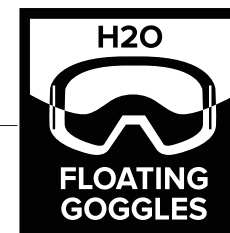
H2O FLOATING GOGGLES

ONE SIZE

CODE/COLOUR: **18144 LIME**
18143 BLACK
18145 ORANGE
19138 CLEAR

• FABRICATION: 100% POLARISED LENSES

Choice of Black, Clear and Fluro Frames • All with Polarised Lenses • Unsinkable • Custom JP Strap 45mm wide Silicone coated strap eliminates slippage.



100% POLARISED LENS



JP H2O FRAMELESS GOGGLES

ONE SIZE

CODE/COLOUR: **19137 BLACK**

• FABRICATION: 100% POLARISED LENSES

Frameless Goggle Design • Wear With Helmet Or Without • Polarised Lens Unsinkable • Custom JP Strap 45mm wide Silicone coated strap eliminates slippage.



GLOVES

MATRIX/RX

GLOVES WITH TOUCH SCREEN FINGERTIPS





RX SHORT FINGER RACE GLOVE

SIZES: XS, S, M, L, XL, 2XL

CODE/COLOUR: **19099 WHITE/BLACK**
19100 RED
19101 YELLOW/BLACK

• FABRICATION: 1mm Ultra Thin Neoprene
 Spandex side finger stretch gussets • Rubberised Pro-Grip thumb panel • Double stitched high stress zones • Durable 2 Ply padded palm • Adjustable Velcro/Rubber Wrist Closure



RX HEATSEEKER GLOVE

SIZES: XS, S, M, L, XL, 2XL

CODE/COLOUR: **19102 BLACK**

• FABRICATION: 1mm Ultra Thin Neoprene
 Designed For Added Warmth/Protection • 1mm Ultra Thin Neoprene Cuff • 1mm Closed Cell Neoprene Fingers • 0.5mm Neoprene Side Finger Stretch Panels - Rubberised Pro Grip Thumb Panel • Durable 2 Ply Padded Palm - Adjustable Velcro/Rubber Wrist Closure. **Touch Screen Fingerprints.**



RX RACE GLOVE

SIZES: XS, S, M, L, XL, 2XL

CODE/COLOUR: **19103 WHITE/BLACK**
19104 RED
19105 YELLOW/BLACK

• FABRICATION: 1mm Ultra Thin Neoprene
 Spandex side finger stretch gussets • Rubberised Pro-Grip thumb panel • Double stitched high stress zones • Durable 2 Ply padded palm • Adjustable Velcro/Rubber Wrist Closure. **Touch Screen Fingerprints.**



RX SUPERLITE GLOVE

SIZES: XS, S, M, L, XL, 2XL

CODE/COLOUR: **19106 NAVY/RED**
19107 NAVY/GOLD
19108 BLACK/WHITE
19109 YELLOW/BLACK

• FABRICATION: Sublimated Ultra-Lite One Piece Upper
 Custom Jetpilot Graphics . One Piece Clarino Palm And Reinforced Thumb Panel . Embossed Airoprene Cuff . Custom Jetpilot Wrist Closure . Sonic Welded Jetpilot Icon.
Touch Screen Fingerprints.

BAGS AND COVERS





TRANSIT COFFIN WAKE BAG

SIZE: LENGTH 144CM X WIDTH 52 CM (INSIDE)
CODE/COLOUR: **14069 BLACK**

FEATURES: 600 D Nylon • Heavy duty main zipper/easy grab pulls • Foam in-layed board protection • Backpack straps carry option • Wet gear compartment



MULTIFIT COVER

SIZE: LENGTH 139 CM X WIDTH 66 CM (INSIDE)
CODE/COLOUR: **14070 BLACK**

FEATURES: 600 D Nylon • Heavy duty main zipper/easy grab pulls • Foam inlayed board protection • Fits also for Kneeboards



SURF / WAKE BAG

SIZE: LENGTH 158 CM X WIDTH 70 CM (INSIDE)
CODE/COLOUR: **17000 BLACK**

FEATURES: 600D Nylon • Heavy duty main zipper/easy grab pulls • Foam inlayed board protection

Capacity 60 Litres



LARGE ROLL TOP WATERPROOF BAG

ONE SIZE
CODE/COLOUR: 19110 BLACK

- FABRICATION: COATED TARPULIN
Durable Coated Tarpaulin • Removable Back Pack Shoulder Straps • Roll Over Water Tight Entry • 60L Capacity • Waterproof to Protect your valuable

20
19

Capacity 5 Litres



SMALL ROLL TOP WATERPROOF BAG

ONE SIZE
CODE/COLOUR: 19111 BLACK

- FABRICATION: COATED TARPULIN
Durable Coated Tarpaulin • Removable Shoulder Strap • Roll Over Water Tight Entry • 5L Capacity • Waterproof to Protect your valuables



JET LITE

3,9 KG

144L



ESCAPE BAG

SIZE: HEIGHT 1100CM X WIDTH 400CM X 370D, WEIGHT 3,9KG, CAPACITY 144L
CODE/COLOUR: 17231 BLACK

- FEATURES: Heavy 600 D Nylon • Jetlite Technology • Lightweight • Flexible and Durable • Compression Moulded Eva Base • Self Standing • Telescopic Handle - Detachable / Adjustable anti slide shoulder straps • Two way lockable zippers • Foam padded carry handle • Detachable backpack • High Stitch Count Jetpilot Embroidery



TOWABLE CARRY BAG

ONE SIZE
CODE/COLOUR: **19112 BLUE**

- FABRICATION: HEAVY DUTY 840D POLYESTER
- Extra Heavy Duty Nylon Towable Carry Bag With Oversize Zipper • 3 Cinch Straps With Buckles for Adjustability, Shoulder Straps Assist With Larger Towables
- Fits All Our JP Towable Models



Capacity 144 Litres

ESCAPE TRAVEL BAG

ONE SIZE
CODE/COLOUR: **19113 MILITARY**

- FABRICATION: 600D POLYESTER
- Jetlite Technology - Lightweight, Flexible and Durable - Compression Moulded EVA Base - Self Standing - Telescopic Handle - Detachable/Adjustable Anti Slide Shoulder Straps - Lockable Zips - Foam Padded Carry Handle - High Stitch Count Jetpilot Embroidery - Contrasting Panels - Weight 3.9kg - Capacity 144 Litres
- SOLD IN PACKS OF 2



Capacity 36 Litres

VENTURE BACK PACK

ONE SIZE
CODE/COLOUR: **19037BLACK**
18245 KHAKI

- FABRICATION: HEAVY DUTY 600D WATER RESISTANT DWR FABRIC
- Roll Down Buckle Top Closure • Side Carry Handles • Padded Vent/Mesh Back Support • 17" Laptop Sleeve • Custom Front Storage Compartment • Dry Storage / Shoe Compartment • Hideaway Straps • Heavy Duty YKK Zippers • Capacity • 36 Litres



Capacity 10 Litres

CHILLED SEAT BAG

ONE SIZE
CODE/COLOUR: **19170 BLACK/BROWN**

- FABRICATION: 600D POLYESTER
- Backpack & Shoulder Straps • Interior Cooling • 10 Litre Capacity • 16*0.8mm Steel Tube Frame • Custom Jetpilot Woven Labels • Fold Out Seating • Mesh Waterbottle Holder

W A T E R A C C E S S O R I E S





1 PERSON TUBE ROPE

ONE SIZE
CODE/COLOUR: **19114 BLACK/YELLOW**

- FABRICATION: NYLON
Designed For Towing A Single Rider • 60 FT, 12 Strand PE Rope • 680 KG Breaking Strain



2-4 PERSON TUBE ROPE

ONE SIZE
CODE/COLOUR: **19115 GREEN**

- FABRICATION: NYLON
Designed For Towing Up To 4 Riders • 60 FT, 12 Strand PE Rope • 1882 KG Breaking Strain



JP WAKE SURF TOW ROPE

ONE SIZE
CODE/COLOUR: **19116 BLUE**

- FABRICATION: NYLON
Custom floatable 9" suede grip handle with Jetpilot Embroidery • 24 foot, 16 strand, 4 sections • 1859 kg breaking strain



2020

TOWABLE BUNGEE CORD

ONE SIZE
CODE/COLOUR: **19117 GREEN**

- FABRICATION: NYLON
4 feet of 9/16 Elastic Bungee Cord to smooth out the strains and stress of towing • Rated at 1882 kg for use on all 1 to 4 Person Towables



JP WAKE ROPE COMBO

ONE SIZE
CODE/COLOUR: **19118 BLUE**

- FABRICATION: :: NYLON
15" Custom "Supa Grip" suede handle • Custom JP end caps and float • 4 Section 75' PE mainline • Custom JP velcro rope hanger



JP DELUXE TOW ROPE COMBO

ONE SIZE
CODE/COLOUR: **19119 BLUE**

- FABRICATION: NYLON
Built for tow in Surfing • 12" Handle • 10' High Floatation rope
• Special rope weave eliminates coiling and tangling • 35' total length of polypropylene non water-absorbing rope with a custom 8inch float • Marine grade Stainless Steel snap hook



DOUBLE ACTION MANUAL HAND PUMP

CODE/COLOUR: 19120 YELLOW

- FABRICATION: PVC
- Cuts inflation time in half • Ergonomic handle and footplate • Includes 4 universal valve fittings • Deflation option • Great for inflation top up



DC INFLATABLE PUMP

CODE/COLOUR: 19121 BLACK

- FABRICATION: PVC
- High volume DC pump • Plugs into car acc socket • Massive .78psi pressure • Includes 3 different nozzle options • Quickly inflates /deflates all large volume inflatables



LIGHTWEIGHT DC PUMP

CODE/COLOUR: 19122 BLACK

- FABRICATION: PVC
- High volume DC pump - Plugs into car acc socket - has 3 metre cord for easy inflation of all large volume inflatables - Massive 1 psi pressure - includes 3 different nozzle options



LIGHTWEIGHT FLUKE ANCHOR

CODE/COLOUR: 19123 BLUE/LIME

- FABRICATION: NYLON
- 0.79 Kg Fluke Style Anchor • Thick Vinyl Coating Protects Finish • 7.6m Of Marine Grade Rope • Heavy Duty Nylon Bag For Stowing



COMPLETE FOLDING ANCHOR SYSTEM

CODE/COLOUR: 18157 BLUE/LIME

- FABRICATION: NYLON
- 1.5 kg Coated Grapnel Anchor • 7.6m Of Marine Grade Anchor Line • Complete System Stows in small spaces • Stainless Steel Snap Hook • Padded Nylon Case protects finishes and Dampens noise when stowed



PWC SAND ANCHOR

CODE/COLOUR: 18146 BLACK

- FABRICATION: HEAVY DUTY 600D NYLON
- 6m of Poly Rope with float and stainless hook attachment • Fill with sand or rock to secure your PWC



PWC FENDER

CODE/COLOUR: **18158 BLACK**
19127 WHITE

- FABRICATION: NYLON
- Docking Protection for your PWC • Hinges in the centre to protect PWC bodies by hooking under the rub rail with a molded acetyl hook • Then connect to cleats or ski eyes with the coated steel hook • 2 Per PWC Recommended



PWC TOW ROPE

CODE/COLOUR: **19126 BLUE/LIME**

- FABRICATION: NYLON
- 6m of Floating Marine Grade Tow Rope • Safety snap hook at each end • Stows neatly with rope hanger • Soft Hook works great with recessed bow eyes



TRIPLE HOOK RATCHET TIE DOWN

CODE/COLOUR: **18159 BLUE**

- FABRICATION: NYLON
- With 3 hooks and soft hook the powersport ratchet tie down is perfect for Motorcycles, ATVs and PWCs • 8 Feet long to fit all trailers



TOW STRAP WITH MESH BAG

CODE/COLOUR: **18162 BLUE/LIME**

- FABRICATION: NYLON
- 4.5M Tow Rope with Loops at both ends • Stainless Steel Safety Hook • Extra Heavy Duty Strap • Includes Mesh Storage Bag



PWC BUNGEE DOCK TIE

CODE/COLOUR: **18142 BLACK/CHARCOAL**

- FABRICATION: NYLON
- 180 cm of Elastic Bungee Cord for secure docking • Durable Nylon cover and Two 15cm JP Floats and PVC Tubes provide extra protection for your PWC



PWC LANYARD

CODE/COLOUR: **18160 KAWASAKI**
18161 YAMAHA

- FABRICATION: NYLON
- Our Ultimate Lanyard will operate many brands of PWC and Jet Boats (Except D.E.E.S Seadoos) • Simply attach with Floating Wrist Band or D-Ring of your Lifejacket • Pealess High Pitched Whistle for emergencies



FLOATING WRIST BAND

CODE/COLOUR: **19128 BLACK**

- FABRICATION: NYLON
- Simply Clip Lanyard to D-Ring Supplied On Your Wrist Strap • Fasten Lanyard To Watercraft Before Starting • Neoprene Padding Provides Comfort And Floatation • Wrist Strap Has Adjustable Velcro Closure • Tough ABS Plastic Components • Designed For Seadoo PWC Lanyards

TOWABLES



CAPTURE EVERYTHING

FEATURING JETPILOT'S PATENTED POINT OF
VIEW CAMERA MOUNT

Introducing the new Jetpilot towable range for
Watersports 2019. Featuring Jetpilot's patented P.O.V
mounting point so you can capture all the action.



JETPILOT GO PRO MOUNTING POINT

- Adaptable for all POV Cameras
- Using GOPRO Surf mount, float and leash is recommended for added stability and security.



SLINGSHOT TUBE

SIZE: L62"(152CM) x W63"(160CM) INFLATED SIZE
CODE/COLOUR: 18151 YELLOW

FEATURES: Designed for up to two riders • Heavy duty full nylon cover with zipper • Heavy gauge PVC bladder • Pull up straps for re-boarding • Double webbing foam handles w/ padded knuckle guards • Self-bailing drain vent • Reinforced Tow system • Quick connect Tow hook • POV Camera mounting point • Padded valve cover • Puncture repair kit





JETPILOT GO PRO MOUNTING POINT

- Adaptable for all POV Cameras
- Using GOPRO Surf mount, float and leash is recommended for added stability and security.



WING 2 TUBE

SIZE: L69"(175CM) x W70"(178CM) INFLATED SIZE
CODE/COLOUR: 18153 BLUE/GREEN

FEATURES: Designed for up to two riders • Built-in angle side wings • Heavy duty full nylon cover with zipper • Heavy gauge PVC bladder • Double webbing foam handles with padded knuckle guards • Pull up straps for re-boarding • Self-bailing drain vent • Reinforced Tow system • Quick connect Tow hook • POV Camera mount • Padded valve cover • Puncture repair kit





JETPILOT GO PRO MOUNTING POINT

- Adaptable for all POV Cameras
- Using GOPRO Surf mount, float and leash is recommended for added stability and security.



WING 3 TUBE

SIZE: L72"(180CM) x W86"(218CM) INFLATED SIZE
CODE/COLOUR: 18154 BLUE/ORANGE

FEATURES:

- Designed for up to three riders
- Built-in angle side wings
- Heavy duty full nylon cover with zipper
- Heavy gauge PVC bladder
- Double webbing foam handles with padded knuckle guards
- Pull up straps for re-boarding
- Self-balling drain vent
- Reinforced tow system
- Quick connect tow hook
- POV Camera mount
- Padded valve cover
- Puncture repair kit





JETPILOT GO PRO MOUNTING POINT

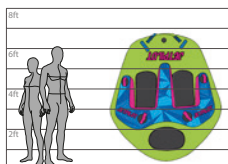
- Adaptable for all POV Cameras
- Using GOPRO Surf mount, float and leash is recommended for added stability and security.



FREERIDE 3 TUBE

SIZE: L62"(152CM) x W63"(160CM) INFLATED SIZE
CODE/COLOUR: 18152 MULTI

FEATURES: Designed for up to three riders • Built-in angle side wings • Heavy duty full nylon cover with zipper • Heavy gauge PVC bladder • Double webbing foam handles with padded knuckle guards • Pull up straps for re-boarding • Self-bailing drain vent • Reinforced tow system • Quick connect tow hook • POV Camera mount • Padded valve cover • Puncture repair kit





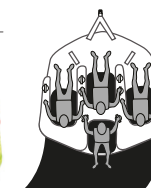
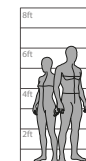
JETPILOT GO PRO MOUNTING POINT
 • Adaptable for all POV Cameras
 • Using GOPRO Surf mount, float and leash is recommended for added stability and security.



JP4 TUBE

SIZE: L91"(231CM) x W94"(238CM) DEFLATED SIZE
 CODE/COLOUR: 18155 MULTI

FEATURES: Designed for up to four riders • Built-in angle side wings • Heavy duty full nylon cover with zipper • Heavy gauge PVC bladder • Double webbing foam handles with padded knuckle guards • Pull up straps for re-boarding • Self-bailing drain vent • Reinforced tow system • Quick connect tow hook • POV Camera mount • Padded valve cover • Puncture repair kit





VORTEX TUBE

SIZE: DIAMETER 48" / 122CM (INFLATED)
CODE/COLOUR: **18147 ORANGE/PURPLE**

FEATURES: Designed for one rider • Heavy duty nylon partial cover • Heavy gauge PVC bladder • Double webbing foam handles with padded knuckle guards • Self-bailing drain vent • Reinforced Tow system • Quick connect Tow hook • Go Pro mount • Padded valve cover • Puncture repair kit

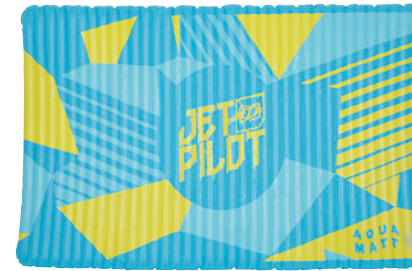
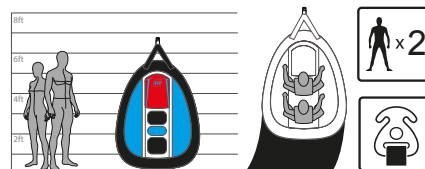




2 MAN RUNABOUT TOWABLE

SIZE: L62"(152CM) x W63"(160CM) INFLATED SIZE
CODE/COLOUR: 17017 MULTI

FEATURES: Designed for up to two riders • Built-in angle side wings • Heavy duty full nylon cover with zipper • Heavy gauge PVC bladder • Double webbing foam handles with padded knuckle guards • Pull up straps for re-boarding • Self-bailing drain vent • Reinforced tow system • Quick connect tow hook • Padded valve cover • Puncture repair kit



JP AQUA MATT - 72"X120"

CODE/COLOUR: 19148 BLUE/YELLOW

• FABRICATION: HEAVY DUTY PVC
All new for 2018 • Inflatable Floating Matt • Large 6 ft by 10 ft size • Heavy Duty PVC • Quick Inflation • Holds up to Four Adults • Use as a walkway between boats or a comfortable matt for relaxing on the water • Pack of 1 • Multiple tie points



JETPILOT
DOG PFD

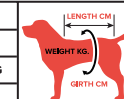
DOG PFD

CODE/COLOUR: 19129 BLUE
19039 YELLOW

FABRICATION: NYLON AND NEOPRENE
Durable Nylon And Neoprene Outer • Adjustable Webbing Straps For A Secure Fit • Keep Your Pooch Safe!

SIZE CHART (LENGTH IS MEASURED FROM NECK TO TAIL)

SIZE	SMALL	MEDIUM	LARGE	XLARGE
LENGTH	28 - 33 CM	33 - 40 CM	40 - 48 CM	48 CM
WEIGHT	7 - 9 KG	9 - 22.5 KG	18 - 31.5 KG	OVER 31.5 KG
GIRTH	66 CM	71 CM	76 CM	83 CM



APPAREL



SPLIT UP MENS FLEECE HOODIE

SIZES: S, M, L, XL, 2XL, 3XL
CODE/COLOUR: **19159 BLACK/MILITARY**

• FABRICATION: Poly/Cotton Outer Body 320 gsm Pullover Design. Jersey Lined Hood. Split Panel Design. One Colour Front and Back Embroidery. Custom Trims



MINI BRICK MENS FLEECE HOODIE

SIZES: S, M, L, XL, 2XL, 3XL
CODE/COLOUR: **19149 CAMO**

• FABRICATION: Poly/Cotton Outer Body 320 gsm Pullover Design. Two Colour Front Chest Embroidery. Custom Trims



DAGGA MENS TEE

SIZES: S, M, L, XL, 2XL, 3XL
CODE/COLOUR: **19038 BLACK**

• FABRICATION: 100% Cotton 160gsm One Colour Front Print . Two Colour Back Print . Internal Screenprinted Label . Internal Woven Size Pip



MINI BRICK MENS CREW

SIZES: S, M, L, XL, 2XL, 3XL
CODE/COLOUR: **19150 BLACK**

• FABRICATION: Poly/Cotton Outer Body 320 gsm Crew Block. Two Colour Front Chest Embroidery. Custom Trims



JACK MENS FLANNO

SIZES: S, M, L, XL, 2XL, 3XL
CODE/COLOUR: **19151 BLUE**

• FABRICATION: Cotton Flannel Jetpilot Pocket Flag Label . Patch Pockets With Button Closure . Custom Trims



JPCO MENS TEE

SIZES: S, M, L, XL, 2XL, 3XL
CODE/COLOUR: **19152 MARLE**

• FABRICATION: 100% Cotton 160gsm One Colour Front Print . One Colour Back Print . Internal Screenprinted Label . Internal Woven Size Pip



DESERT STORM MENS TEE

SIZES: S, M, L, XL, 2XL, 3XL
 CODE/COLOUR: **19153 WHITE**
19155 BLACK

- FABRICATION: 100% Cotton 160gsm Five Colour Front Print. Internal Screenprinted Label . Internal Woven Size Pip



ROSE SUPPLY MENS TEE

SIZES: S, M, L, XL, 2XL, 3XL
 CODE/COLOUR: **19156 BLACK**

- FABRICATION: 100% Cotton 160gsm Three Colour Front Print . Three Colour Back Print . Internal Screenprinted Label . Internal Woven Size Pip



COMPANY STRIPE MENS TEE

SIZES: S, M, L, XL, 2XL, 3XL
 CODE/COLOUR: **19154 BLACK/WHITE**

- FABRICATION: 100% Cotton 160gsm Striped Tee. Two Colour Front Embroidery. Internal Screenprinted Label . Internal Woven Size Pip



CAUSE PANEL MENS TEE

SIZES: S, M, L, XL, 2XL, 3XL
 CODE/COLOUR: **19157 MARL/BLACK**

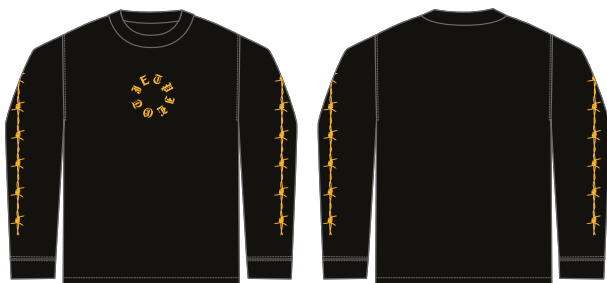
- FABRICATION: 100% Cotton 160gsm One Colour Front Print Panelled Design. Internal Screenprinted Label . Internal Woven Size Pip



CHECKERED L/S MENS TEE

SIZES: S, M, L, XL, 2XL, 3XL
 CODE/COLOUR: **19158 MILITARY**

- FABRICATION: 100% Cotton 160gsm One Colour Front Print. One Colour Back and Sleeves Print. Internal Screenprinted Label . Internal Woven Size Pip



WIRED L/S MENS TEE

SIZES: S, M, L, XL, 2XL, 3XL

CODE/COLOUR: **19169 BLACK/YELLOW**

• FABRICATION: 100% Cotton 160gsm One Colour Front Print and Sleeves, Internal Screenprinted Label . Internal Woven Size Pip



SLATE MENS BOARDSHORT / WALKSHORT

SIZES: 28, 30, 32, 34, 36, 38, 40, 42

CODE/COLOUR: **19165 BLACK**
19166 CAMO

• FABRICATION: STRETCH AND WASHED COTTON ELASTANE

Tie Closure • Custom Patch • Back Flap Pocket • Lycra Fly • Triple Stitched Crotch Panels



NUMOTO MENS BOARDSHORT 20 inch

SIZES: 28, 30, 32, 34, 36, 38, 40, 42

CODE/COLOUR: **19160 CHARCOAL/MAROON**
19161 BLACK/BLUE

• FABRICATION: BAJA

Tie Closure • Technical Multi Panel • High Stitch Count Embroidery and Tech top-stitching • Dual Tech Zippered Pockets • Zippered Fly • Comfort Mesh Waistband • Triple Stitched Crotch Panels



FLARE MENS BOARDSHORT 19inch

SIZES: 28, 30, 32, 34, 36, 38, 40, 42

CODE/COLOUR: **19162 YELLOW/ORANGE**
19163 BLUE/RED
19164 CHARCOAL/BLACK

• FABRICATION: STRETCH

Tie Closure • Fully Sublimated body • Side Welt Pocket • Lycra Fly • Triple Stitched Crotch Panels



JP MENS BEANIE

ONE SIZE
CODE/COLOUR: **19167 MAROON**

- FABRICATION: 100% Acrylic - 3D Embroidery Front Logo



STRIKED MENS BEANIE

ONE SIZE
CODE/COLOUR: **19168 GREEN**

- FABRICATION: 100% Acrylic - Jaquard Contrasting Logo - 3D Embroidery Front Logo



FULL CRANK NEW ERA CAP

CODE/COLOUR: **18235 GREY**
18236 NAVY

- FEATURES: NEW ERA - Snapback - 1 Colour HD printed artwork - Flag Label



ACCESSORIES



CORPED HOODED TOWEL

CODE/COLOUR: **19139 BLACK**

- FABRICATION: 100% COTTON VELOUR
EMBROIDERED LOGO
NEW LONGER FIT



CORP BOTTLE OPENER

CODE/COLOUR: **19141 BLACK**

- FABRICATION: STAINLESS STEEL
Brushed Finish • Silicone Coating • 185mm x 40mm
SOLD IN PACKS OF 6



INERTIA TOWEL

CODE/COLOUR: **19140 BLACK**

- FABRICATION: 100% COTTON VELOUR
Printed Artwork



VENTURE MULTI TOOL

CODE/COLOUR: **19142 BLACK**

- FABRICATION: STAINLESS STEEL
Brushed Finish • Strong Plier Head • Regular Pliers • Wire Cutter
• Nail File and Cleaner • Knife • Leather Punch • Flat Phillips
Screwdriver • Saw • Can Opener • Bottle Opener • Lock Machine



BIKE CHAIN KEYRING

CODE/COLOUR: **11222 BLACK**

• FABRICATION: Black Anodised
Custom Bottle Opener with Jetpilot Logo
SOLD IN PACKS OF 6



NEO CAR SEAT COVER

CODE/COLOUR: **19143 BLACK**

FABRICATION: 2MM FLEX FIT NEOPRENE
Multi Fit Water-resistant Seat Cover



PISTON KEYRING

CODE/COLOUR: **11223 ASSORTED**

FABRICATION: CHROME ALLOY
2 x Chrome • 2 x Black Nickel • 2 x Gold
SOLD IN PACKS OF 6



21' CORP DECAL

CODE/COLOUR: **19144 ASSORTED**

- 12 pack



8' CORP DECAL

CODE/COLOUR: **19145 ASSORTED**

- 12 pack



MIXED STICKER PACK

CODE/COLOUR: **19146 ASSORTED**

- 6 per pack

PROMO ITEMS



JP Wrist Bands

CODE/COLOUR: **17239 BLACK**

- FABRICATION: PU Wristband



JP Coreflute

CODE/COLOUR: **17238 BLACK**

400 x 400mm Core Flute Sign



JP Team Trucker's Cap

CODE/COLOUR: **17248 BLACK**

- FABRICATION: Nylon / Cotton Canvas
One Colour Front 2D Embroidery - Nylon Mesh Back -
Branded Taping - Snapback - Rear Flag Label



JP Keyrings

CODE/COLOUR: **17241 BLACK**

- FABRICATION: PU Key Ring 35mm x 35mm

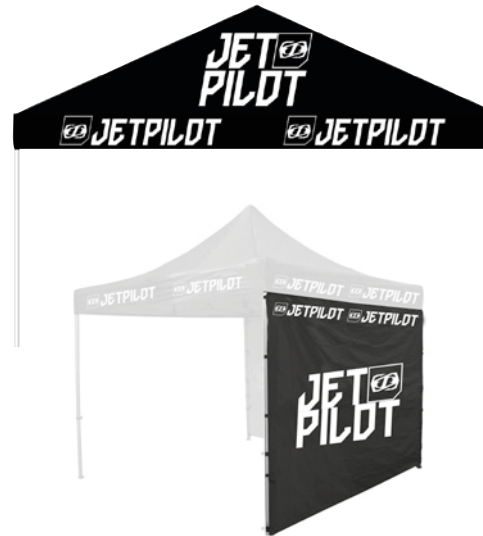
JP EVENT TENT

CODE/ SIZE: 1370101 ALU FRAME WITH BAG 3X3M
 1370102 EVENT TENT COVER ONLY 3X3M BLACK/WHITE
 1370103 EVENT TENT SIDE 3M BLACK/WHITE (1 SIDE)



BANNER 3M

SIZE: ABOUT 300X75CM
 CODE/ COLOUR: 12170 BLACK/WHITE



BEACHFLAG W. POLE

SIZE: FLAG 431X80CM, POLE 508CM
 INCL. CARRY BAG
 CODE/ COLOUR: 11227 BLACK/WHITE





LIVE. RID

E. ESCAPE.



JETPILOT
LIVE. RIDE. ESCAPE.

JETPILOT EUROPE HEADQUARTERS

POD
INTERNATIONAL

POD INTERNATIONAL
KAPELLENWEG 31, 83064 RAUBLING, GERMANY
WWW.POD.INTERNATIONAL
INFO@POD.INTERNATIONAL
++49 (8035) 96 39 29

JETPILOT GLOBAL HEADQUARTERS

10 KINGSTON DRIVE,
HELENSVALE QLD 4212
AUSTRALIA
+61 756658333
CUSTOMERSERVICE@JPIHQ.COM
WWW.JETPILOT.COM.AU

 [FACEBOOK.COM/JETPILOTEUROPE](https://www.facebook.com/JETPILOTEUROPE)

 [@JETPILOTEUROPE](https://www.instagram.com/JETPILOTEUROPE)